



Paris Saclay

09/18/2012

Knowledge Intensive Business Service

% of KIBS in the economy

- Silicon Valley: 28%
- **Paris: 27%**
- London : 27%
- New York: 27%



1st academic city in Europe

Number of researchers

- Silicon Valley: 90 000
- **Paris: 80 000**
- London : 12 000
- New York: 75 000

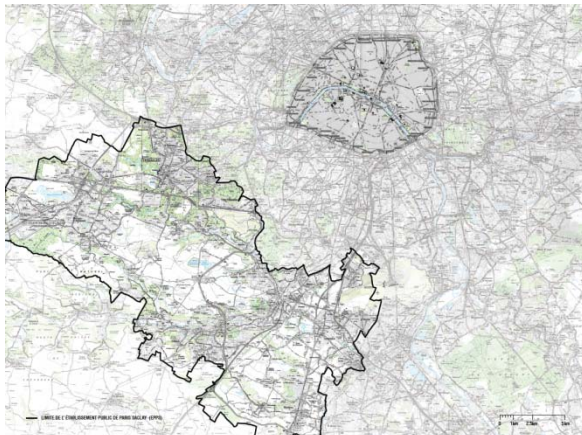


40% of French research

20 % Downtown Paris

Paris-Saclay : a strategic projet for the Grand Paris

- **15 miles** south of Paris center
- **650 000** inhabitants
- **350 000** jobs



- **A scientific and educational hub with global reach**
- **A major business presence in cutting edge industries**



3 NOBEL PRIZES
in physics



6 FIELD MEDALS



erc 38 ERC GRANTS

**15% of French public
research**

17 000 students

Pluridisciplinarity



350 000 jobs

Automotive

Renault, PSA, Daimler Chrysler, Valeo...

ICT

Thalès, Alcatel Lucent, Dassault System, Bouygues Telecom...

Energy

Air Liquide, Alstom, EDF...

Engineering

CG Veritas, Altran...

Aerospace

Thalès, EADS, Safran...

Construction

Bouygues, Vinci, Egis

Food

Danone, Kraft Foods



EDF Research Center

> **Mission:** to provide a stimulating environment to help scientific and industrial projects emerge

Through:

✓ **Urban and landscape planning**

A global team of urban planners and landscape architects already mobilized

✓ **Economic development**

- International attractivity
- Business creation and growth
- Open innovation

> **An usual geographical scope of action**

- ✓ Large scale
- ✓ Focus on Paris Saclay Campus (south): the main development area

> **A new type of government agency**

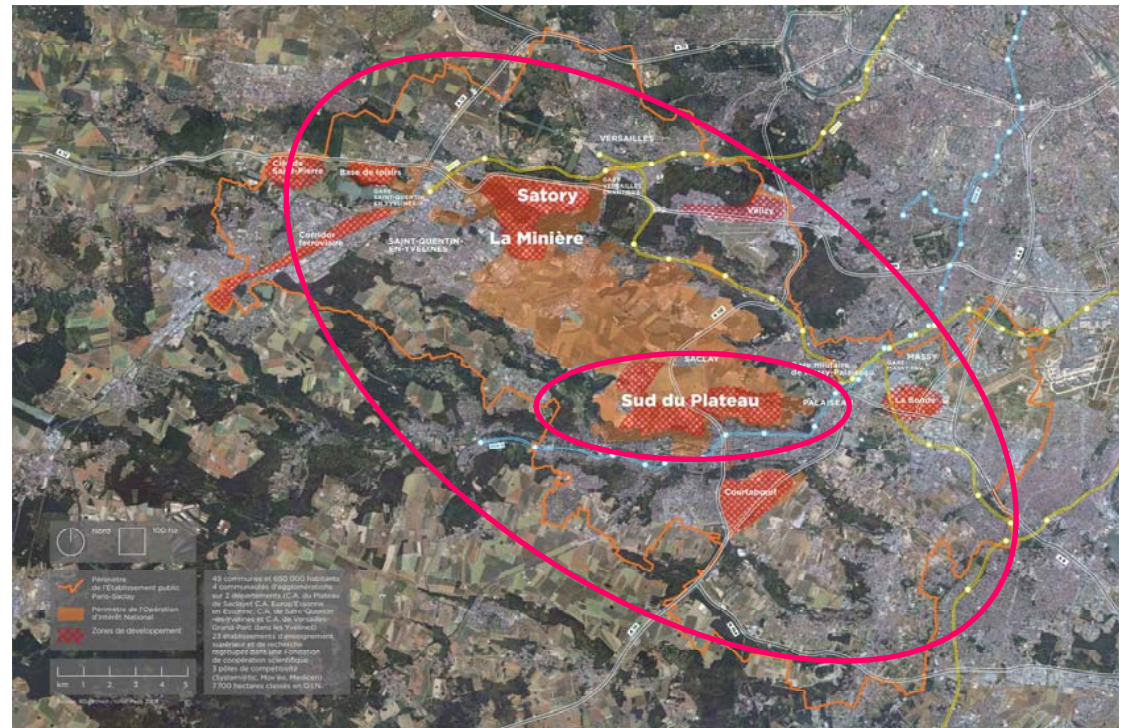
✓ **Governance:**

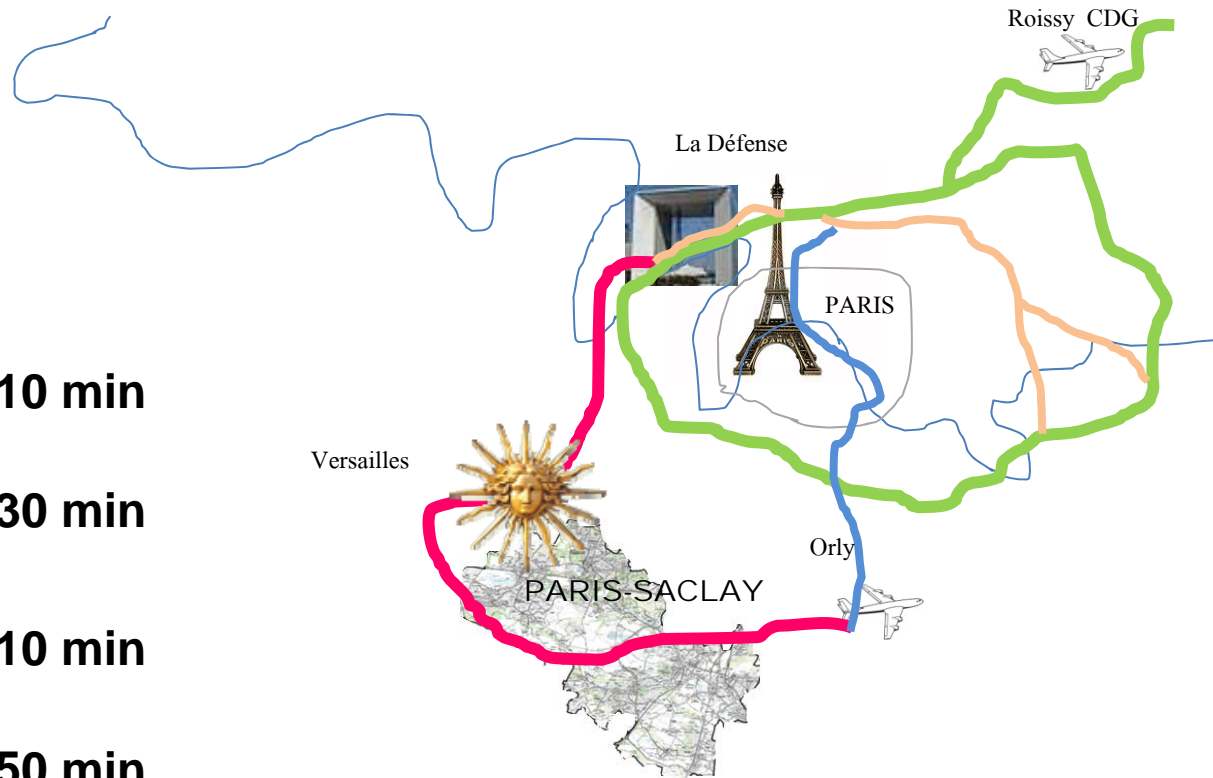
National and local representatives


Business leaders

Well known figures from the scientific community

✓ Works closely with the Fondation de Coopération Scientifique (scientific governance of the campus)






 > 10 min

 > 30 min

PARIS-SACLAY >  > 10 min

 > 50 min

 > 25 min



> Dynamic academic base: 7 leading schools and research centers will relocate to Paris Saclay

Students	> 31 000 (+80%)
PhD / year	> 2 300 (+ 70%)
Prof. / Researchers	> 12 200 (+ 30%)
Research staff	> 20 000 (+ 40%)

> A plan for international attractivity

> Shared facilities

- Sport and cultural facilities, restaurants
- Technology institutes with joint public and private funding
- Incubators and business centers
- Joint laboratories and research infrastructures

> Strong political support

2.5 Billion Euro already committed from the government dedicated to

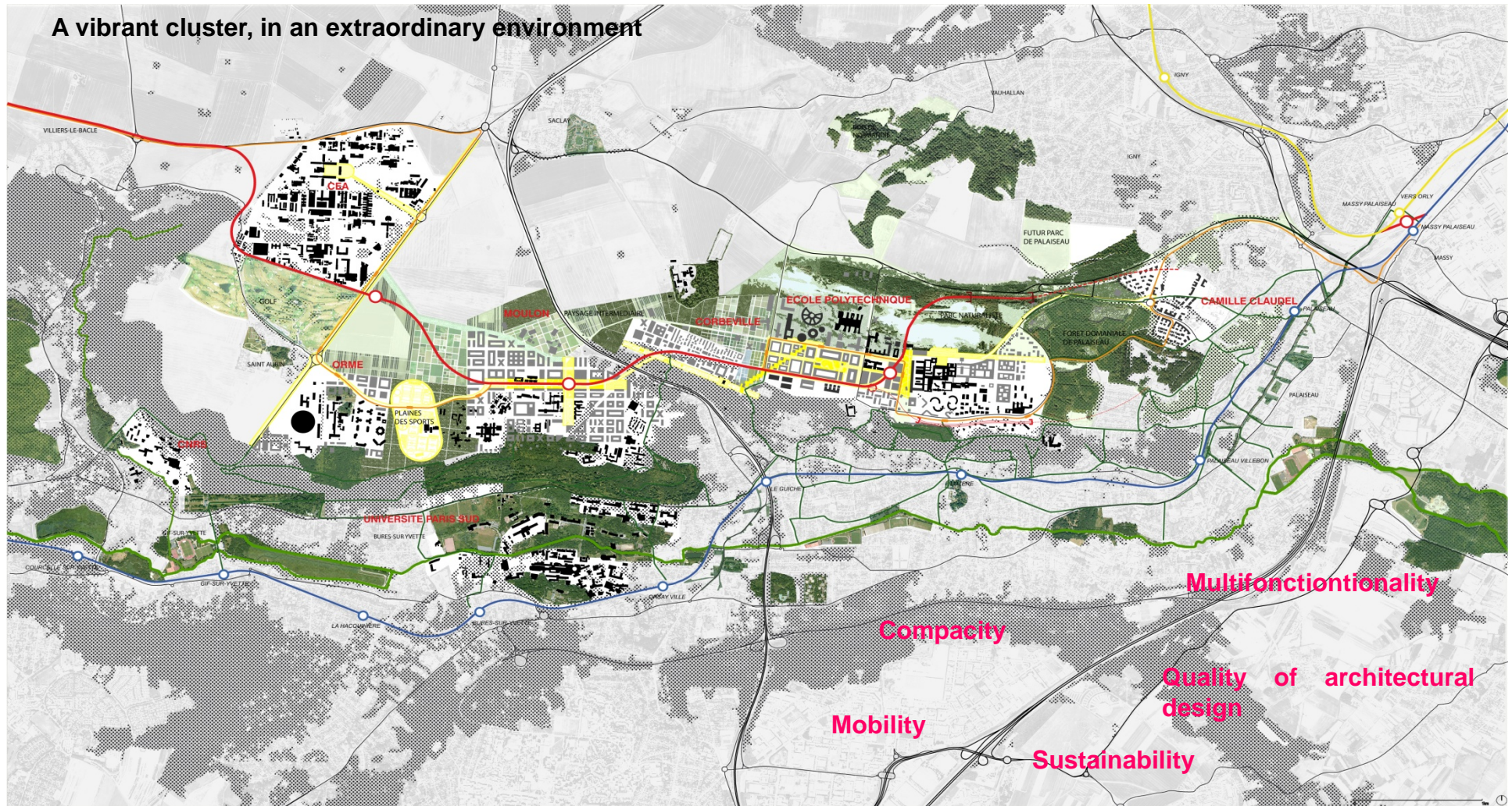
- Public research and academic collaborative projects, research infrastructures, academic real estate...
- A part of shared facilities with local authorities: sport, culture, road network, incubators etc...
- Leverage on private financing

A great urban planning project

2 million m² already planned
15 000 housing projects

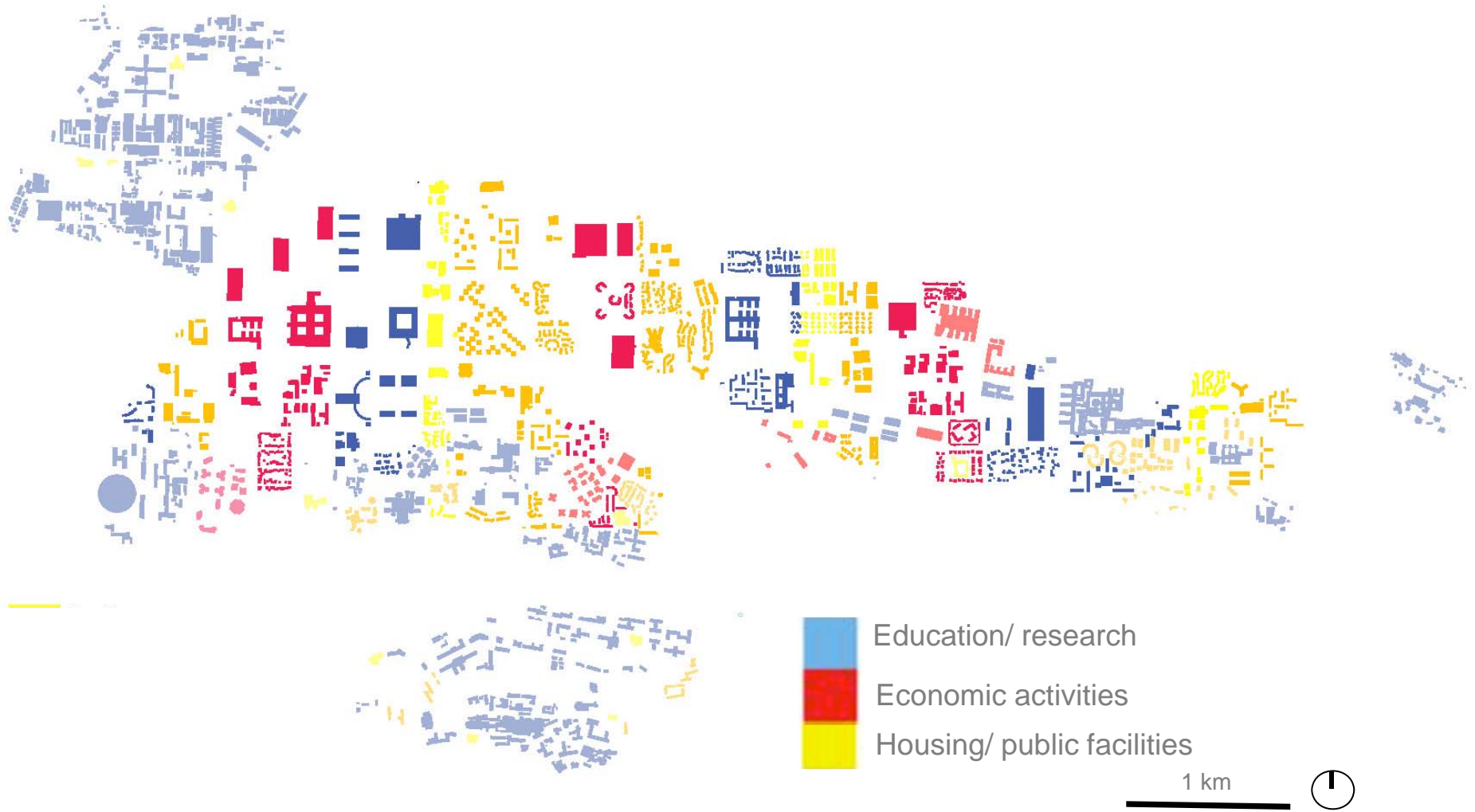
	M² SHON	Number of people
Academic and research	600 000	8000
Economic development	650 000	20 000
Domestic housing (7000)	560 000	16000
Student housing (8000)	210 000	7000
Services, shops, hotels...	65 000	1600
Public facilities	45 000	750
TOTAL	2 160 000	53350

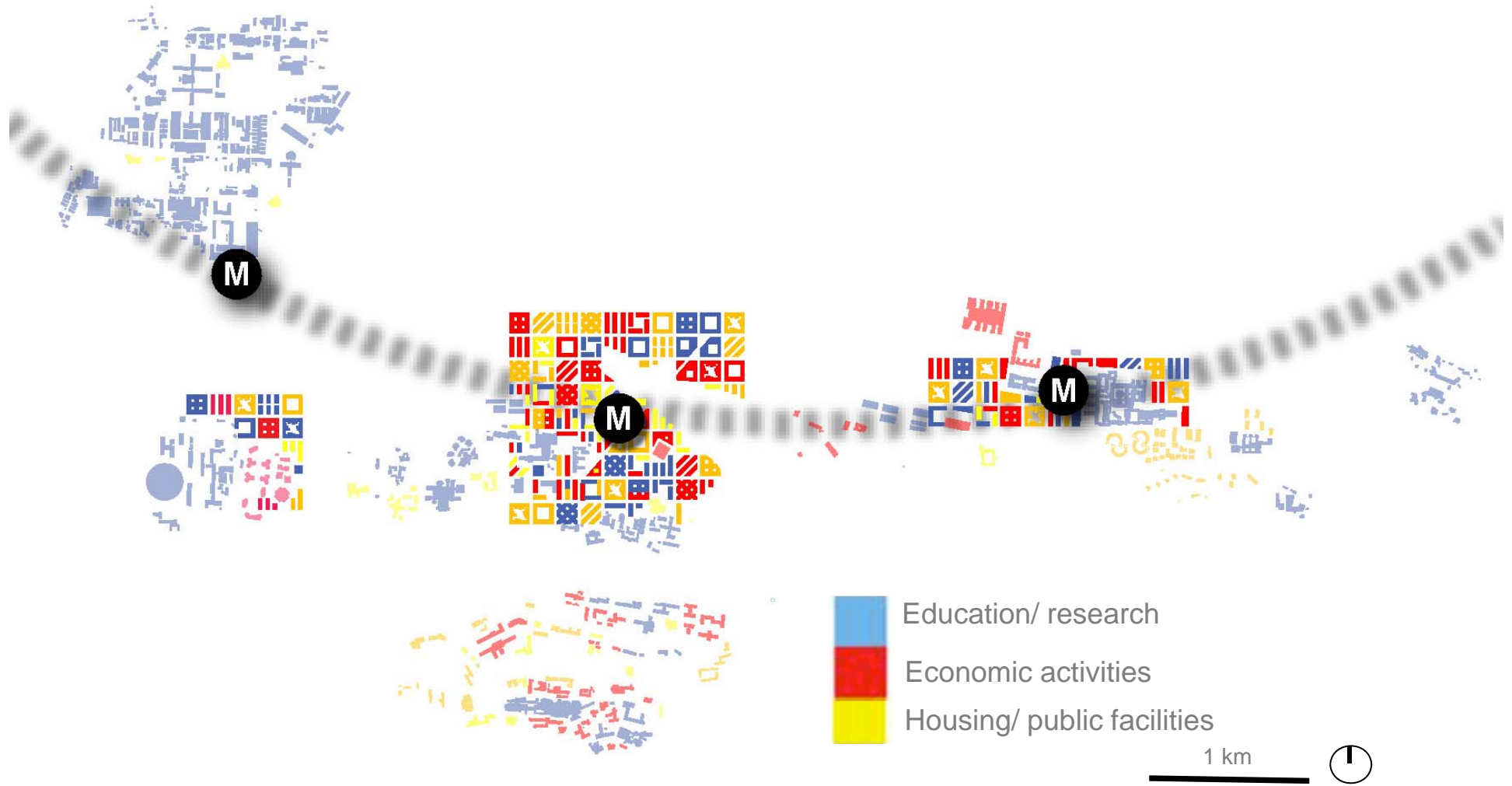
Urban planning principles



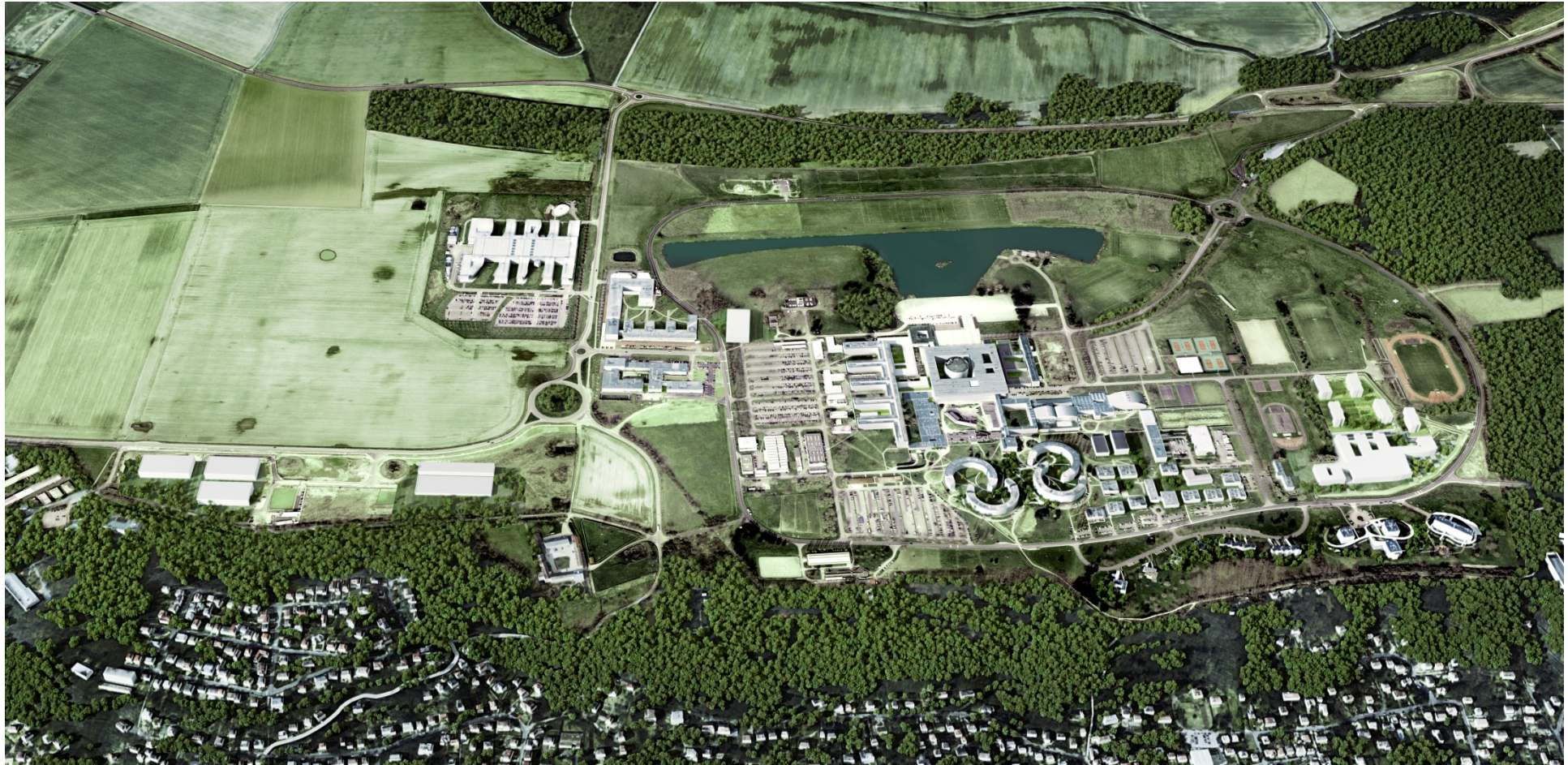
> Creating a “cluster-city”: a great place to innovate AND to live

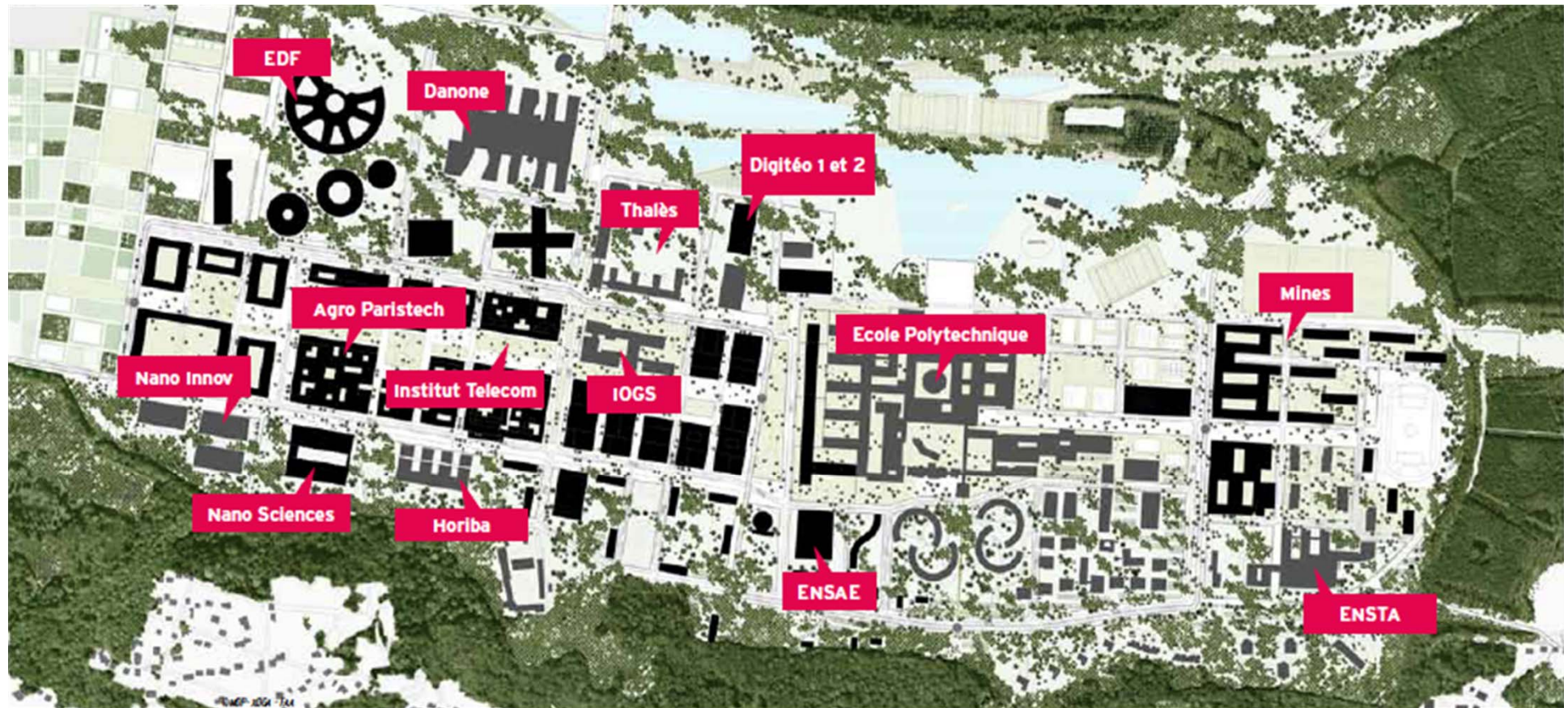
To avoid sprawling on natural/ agricultural spaces



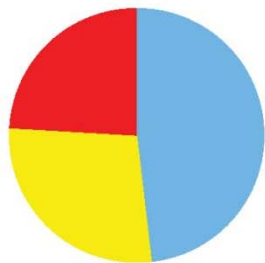


The Ecole Polytechnique district/ Palaiseau

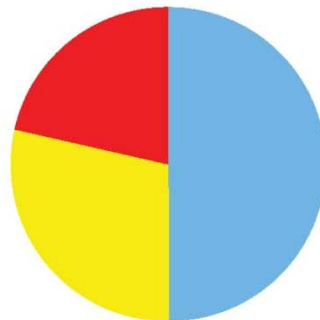




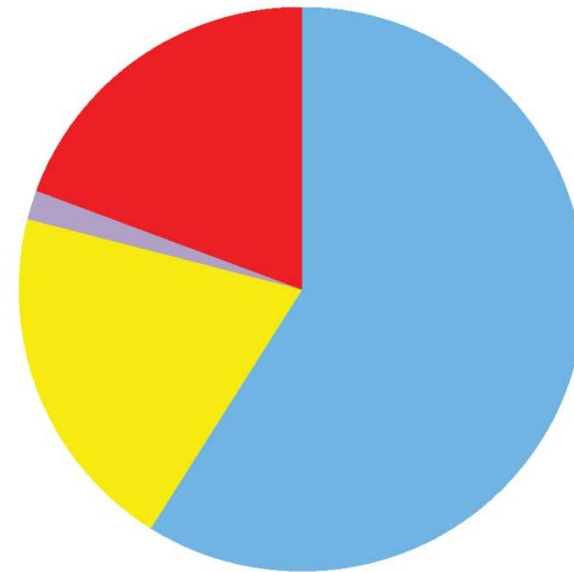
Number of people



2011: 5 400



2013: 7 000



2020 : around 30 000



Students /researchers / teachers



Residents



Employees (offices)



Employees (facilities, shops...)



Naturalist landscape



« cœur de campus »





EDF Research Center

**Ecole polytechnique's
laboratories**



Institute for Molecular Sciences

