



Social Memory, Trust and Civic Values as the Basis for Modern Urban Landscape

Anna Sanina

Associate professor at the Chair of Public Administration and Local Government

anna.g.sanina@gmail.com

Saint-Petersburg



Modern City



- Accumulation
 - Storage
 - Translation
- } of socially significant information

“Social memory includes the means by which information is transmitted among individuals and groups and from one generation to another. Not necessarily aware that they are doing so, individuals pass on their behaviors and attitudes to others in various contexts but especially through emotional and practical ties and in relationships among generations”

(C. Crumley, 2002)

“City Text”



The Case of Okhta Centre (1)



The Case of Okhta Centre (2)



The Case of Okhta Centre (3)



“Trust is a functional alternative to rational prediction for the reduction of complexity. Indeed, trust succeeds where rational prediction alone would fail, because to trust is to live as if certain rationally possible futures will not occur. Thus, trust reduces complexity far more quickly, economically, and thoroughly than does prediction. Trust allows social interactions to proceed on a simple and confident basis, where, in the absence of trust, the monstrous complexity posed by contingent futures would again return to paralyze Action”.

(J.D. Lewis and A. Weigert, 1985)

The Case of “Modern Siege of Leningrad” (“Petersburg Blockade”) (1)



The Case of “Modern Siege of Leningrad” (2)



“Citizens! During artillery bombardment this side of the street is most dangerous”



“Citizens! In the time of Valentina Matviyenko any side of the street is most dangerous”

The Case of “Modern Siege of Leningrad”(3)



2011



1942

The Case of “Modern Siege of Leningrad” (4)



1 The Snowmen Manifestation

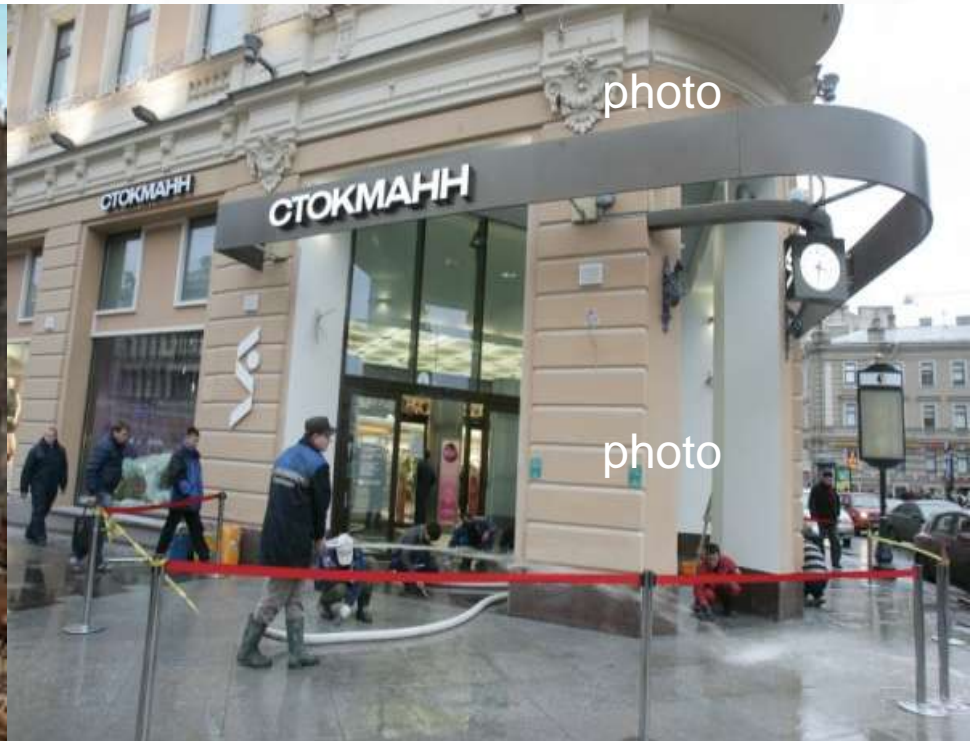
2 Push off, Valya!



The Case of “Stockmann”



2006



2011

Conclusions

- Social memory, trust and civil values are the sources of “daily” urban symbolic landscape creation and are the basis for citizens activity in “extraordinary” situations.
- It’s hard for any society to fit Idealized past with the important changes in living that have taken place in the last 50 years.
- Taking into account the “forgetting” processes, It’s important not to overestimate the role of civil society and its abilities in local politics of memory and urban landscape creation.

Social Memory, Trust and Civic Values as the Basis for Modern Urban Landscape

Anna Sanina

Associate professor at the Chair of Public Administration and Local Government

anna.g.sanina@gmail.com