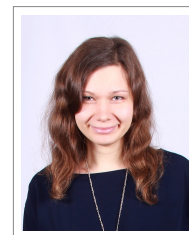


# Ekaterina Lobacheva

+7 (916) 649 8371  
✉ [lobacheva.tjulja@gmail.com](mailto:lobacheva.tjulja@gmail.com)  
Born in 1992, 20 April



---

## Education

- 2014 – current PHD IN COMPUTER SCIENCE  
**National Research University Higher School of Economics, Moscow**  
Doctoral School of Computer Science  
Full-time Advanced Doctoral Programme  
*Advisor: [Dmitry P. Vetrov](mailto:vetrovd@yandex.ru) ([vetrovd@yandex.ru](mailto:vetrovd@yandex.ru))*
- 2009 – 2014 SPECIALIST DEGREE IN APPLIED MATHEMATICS AND INFORMATICS  
**Lomonosov Moscow State University, Russia**  
*Faculty of Computational Mathematics and Cybernetics*  
Graduated with honours, GPA 5.0 out of 5.0  
*Advisor: [Dmitry P. Vetrov](mailto:vetrovd@yandex.ru) ([vetrovd@yandex.ru](mailto:vetrovd@yandex.ru))*
- Additional
- 2013 – 2014 [YANDEX SCHOOL OF DATA ANALYSIS](#), Moscow, Russia  
*Computer Science program*
- Summer 2014 INTERNSHIP AT [UNIVERSITY OF WESTERN ONTARIO](#), Canada  
*Advisor: [Yuri Boykov](mailto:yboykov@gmail.com) ([yboykov@gmail.com](mailto:yboykov@gmail.com))*

---

## Work Experience

- 2015 – 2018 Research Intern at [Kaspersky Lab](#)
- 2014 – 2015 Manager of the [Big Data and Information Retrieval School](#)  
Faculty of Computer Science, HSE, Moscow
- 2013-2014 Researcher at MSU Institute of Complex Systems Mathematical Research  
2013 Advisor on machine learning at [Modeling Technologies Center](#)
- 2011-2012 Junior C++ developer at [Introvision](#)
- 2008-2012 *Social Incentive*: Directorship at a local summer theatre for children.

---

## Teaching Experience

- Fall 2016, 2017 Deep learning at [CMC MSU](#) (lectures and seminars)
- 2016 – current Research seminar "Machine Learning and Applications" at [Faculty of Computer Science, HSE](#)
- Fall 2016, 2017 Machine learning at [HSE and HSE/NES Programmes in Economics](#) (lectures)
- Fall 2015 – 2017 [Bayesian Methods in Machine Learning](#) at [CMC MSU](#), [Yandex School of Data Analysis](#) and [Faculty of Computer Science, HSE](#) (seminars)
- Spring 2015 – 2017 Data analysis at [Faculty of Computer Science, HSE](#) (seminars)

---

## Projects

- Nov 2014 – current **PhD thesis:** Deep learning methods for structured data analysis  
**Advisor:** [Dmitry P. Vetrov](#)  
**Publications:**
- Chistyakov A., Lobacheva E., Kuznetsov A., Romanenko A. Semantic embeddings for program behavior // ICLR Workshop, 2017.
  - Lobacheva E., Chirkova N., Vetrov D. Bayesian Sparsification for Recurrent Neural Networks // The 1st Workshop on Learning to Generate Natural Language, ICML, 2017.
- 2014 – 2015 Adaptive binning of color space for image segmentation task  
**Advisor:** [Yuri Boykov](#)  
**Publications:**
- Lobacheva E., Veksler O., Boykov Y. Joint Optimization of Segmentation and Color Clustering // ICCV, 2015.
- 2011 – 2014 **Master thesis:** Markov Random Field and Shape Boltzmann Machine based locally-global probabilistic models and their application for image segmentation.  
**Advisor:** [Dmitry P. Vetrov](#)  
**Publications:**
- Kirillov A., Gavrikov M., Lobacheva E., Osokin A. and Vetrov D. Deep Part-Based Generative Shape Model with Latent Variables // BMVC, 2016.
- 2013 – 2014 Vital parameters measurement with tactile pressure sensors
- 2012 – 2013 Classification of functional states based on physiological parameters  
**Publications:**
- Ekaterina M. Lobacheva et al. Automated real-time classification of functional states based on physiological parameters // Procedia – Social and Behavioral Sciences, 2013, vol. 86, pp. 373–378.
  - Vladimir V. Galatenko et al. Automated real-time classification of functional states: significance of individual tuning stage // Psychology in Russia: State of the Art, 2013, vol. 6, issue 3.

---

## Interests

Machine learning	Deep learning
Computer vision	Bayesian methods
Optimization	NLP

---

## Computer skills

General	MS Word, Power Point, Excel	Typesetting	LaTeX
Programming	Python, C++	Scientific	MATLAB, Python: NumPy, SciPy, Scikit-learn, Theano, Lasagne, Keras

---

## Languages

Russian Native

English Advanced