



NATIONAL RESEARCH
UNIVERSITY



Founder and Academic
Director of the MIB
program –
Irina G. Kratko
Ph.D, Associate Professor,
Faculty of World Economy
and International Affairs

MIB location: HSE,
11 Pokrovsky Boulevard,
Moscow, Russia

MASTER OF INTERNATIONAL BUSINESS (MIB) PROGRAM

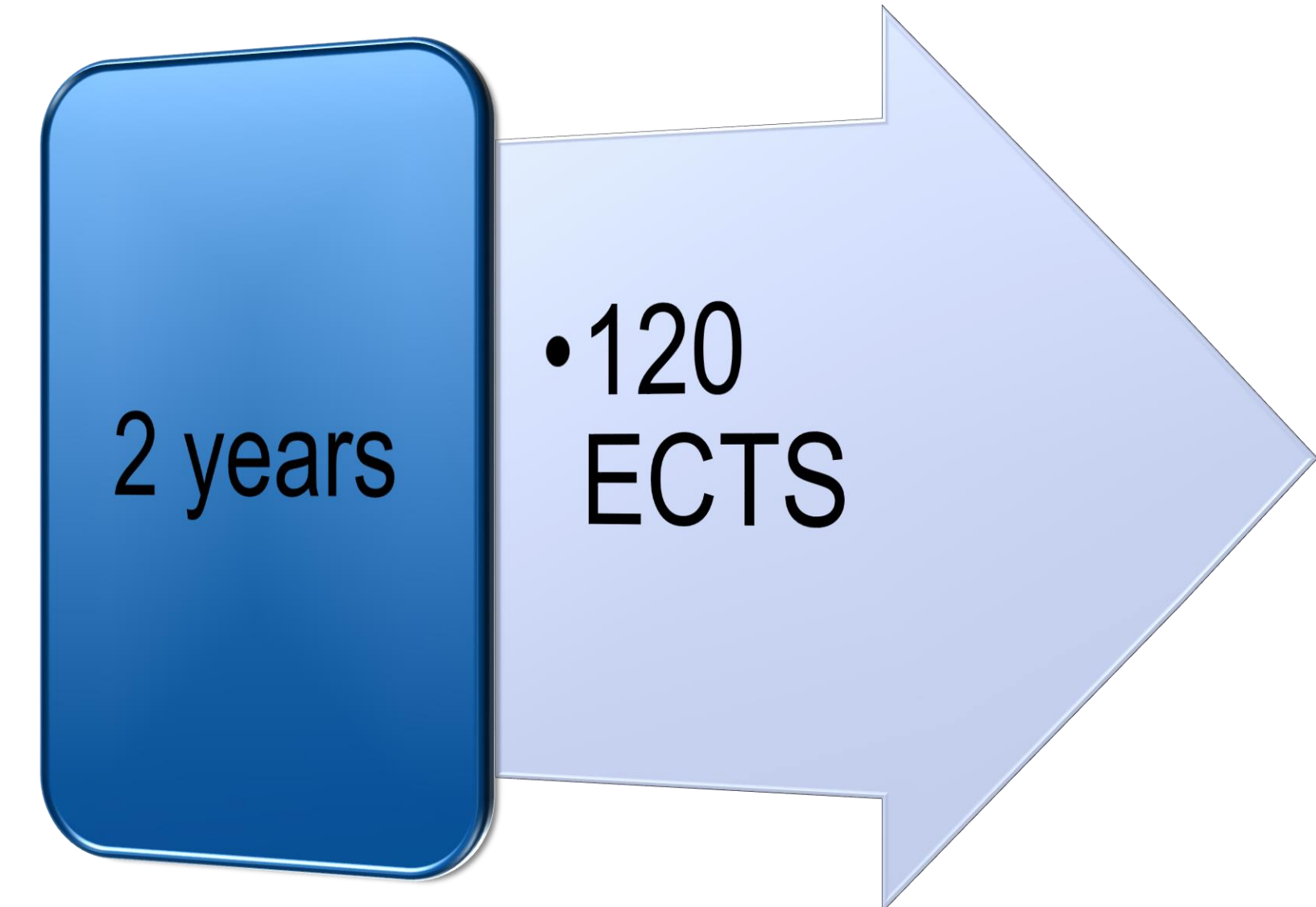
- **Ranked among the Top-100 Master programs in Management by the QS 2020 World University Rankings**
- **Ranked No.1 program in Management in Russia by the QS 2020 World University Rankings by Countries**
- **Accredited by the Agency for Quality Assurance in Higher Education and Career Development (AKKORK)**



MIB PROGRAM FEATURES

MIB program

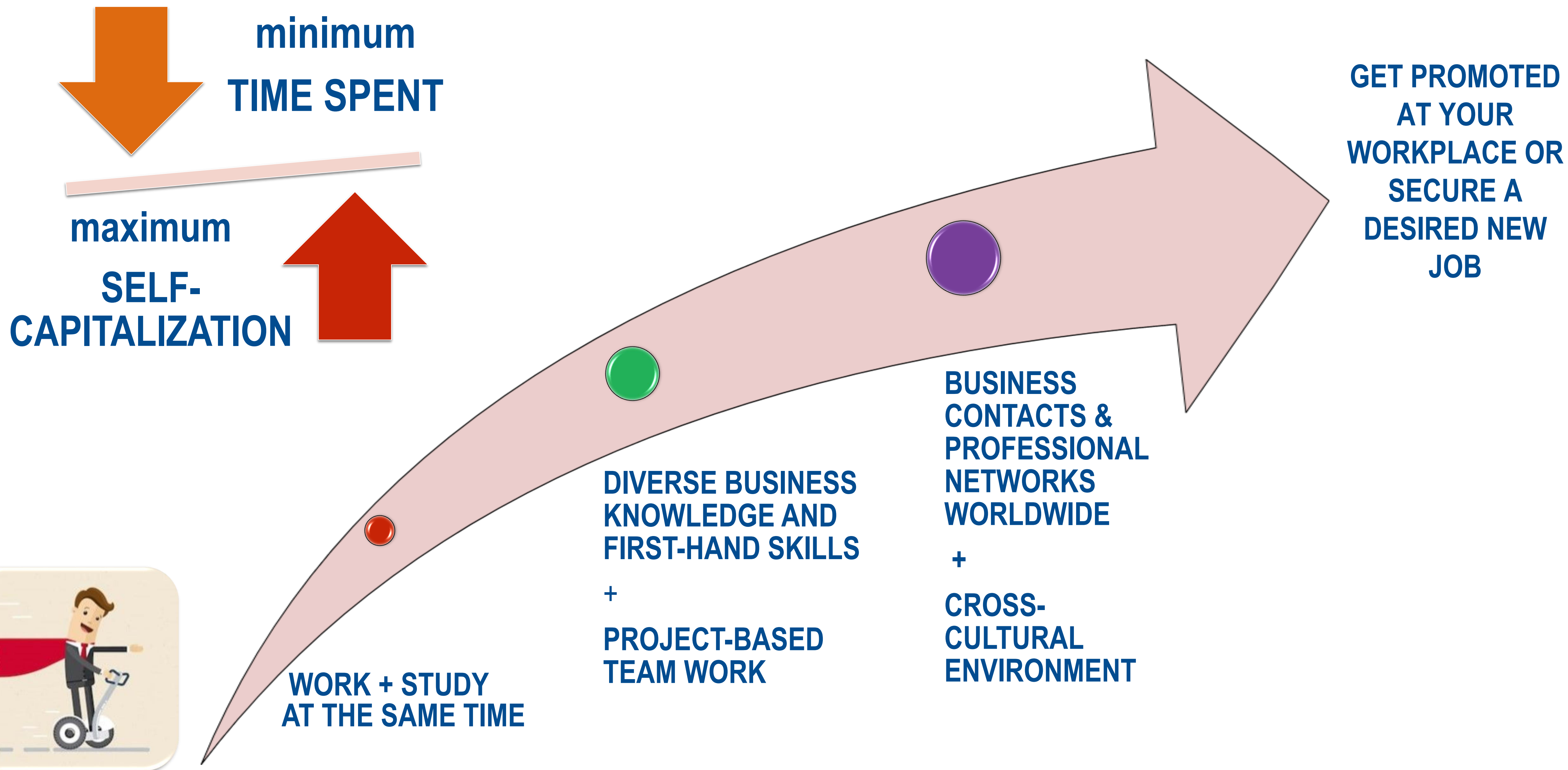
- ✓ **Balanced combination** of a business degree and an international affairs degree
 - equip students with both the traditional business skills and the knowledge in political, economic, legal and socio-cultural aspects of the global marketplace
- ✓ This program is the **first of its kind** in Russia. The curriculum and core aspects meet the requirements of the world's most advanced MIB programs
- ✓ Taught in **English**
- ✓ Classes are scheduled **in the evenings** and on **Saturdays**
- ✓ Tuition-based
- ✓ **Practice-oriented**





MIB MULTIPLIES YOUR VALUE IN LESS TIME

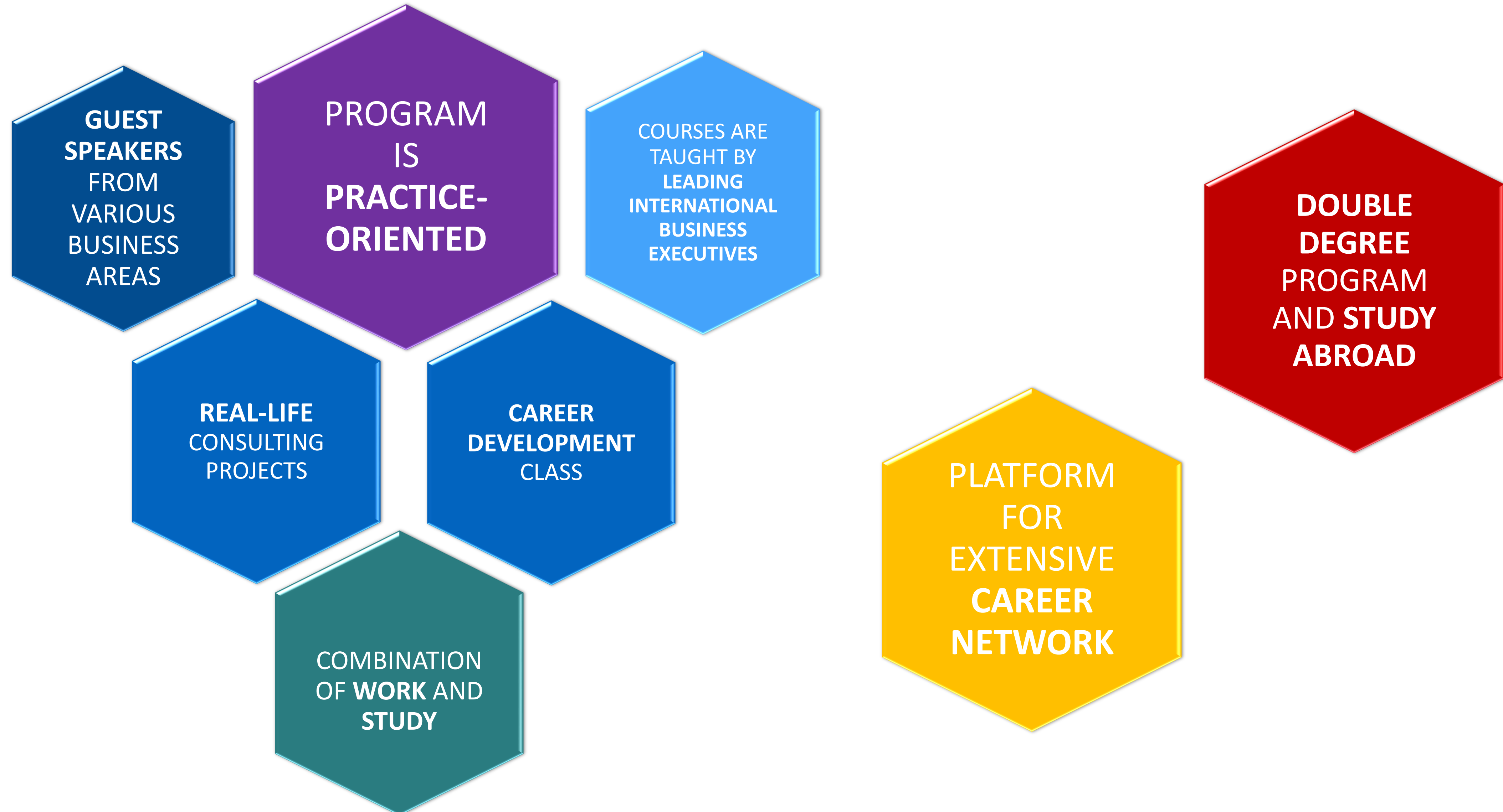
MIB program





MANY IDENTIFIED BENEFITS

MIB program





MIB LEARNING OUTCOMES

MIB program





MIB PROGRAM CONTENTS

MIB program

Adaptational courses:

- **World Economy**

Core study block:

- **International Business Research**
- **Strategic Management of International Companies**
- **Economics: Foundations of Managerial Economics**
- **Introduction to Financial and Managerial Accounting**
- **International Relations**
- **International Corporate Finance**
- **International Marketing**
- **World's Business Cultures**
- **International Business Negotiations**
- **International Business Consulting (real-life projects)**



MIB PROGRAM CONTENTS (CONT.)

MIB program

Elective courses:

- Global Political Economy and Interaction between Business and Politics (required for double degree)
- Political Aspects of International Business (required for double degree)
- International Business Transactions
- International Entrepreneurship
- Corporate Governance of International Companies
- International Operational and Supply Chain Management
- Legal Aspects of International Business
- Doing Business in Asia

Financial Track:

- International Financial Management
- International Finance (Advanced)

Marketing Track:

- International Marketing Strategies
- International Market Research and Analysis
- Global Brand Management
- Digital and Traditional Channels in International Advertising



ACADEMIC MOBILITY (OPTIONAL)

MIB program

Double Degree:

- **Darla Moore School, University of South Carolina (USA)**



- **LUISS University Rome (Italy)**



Study abroad:

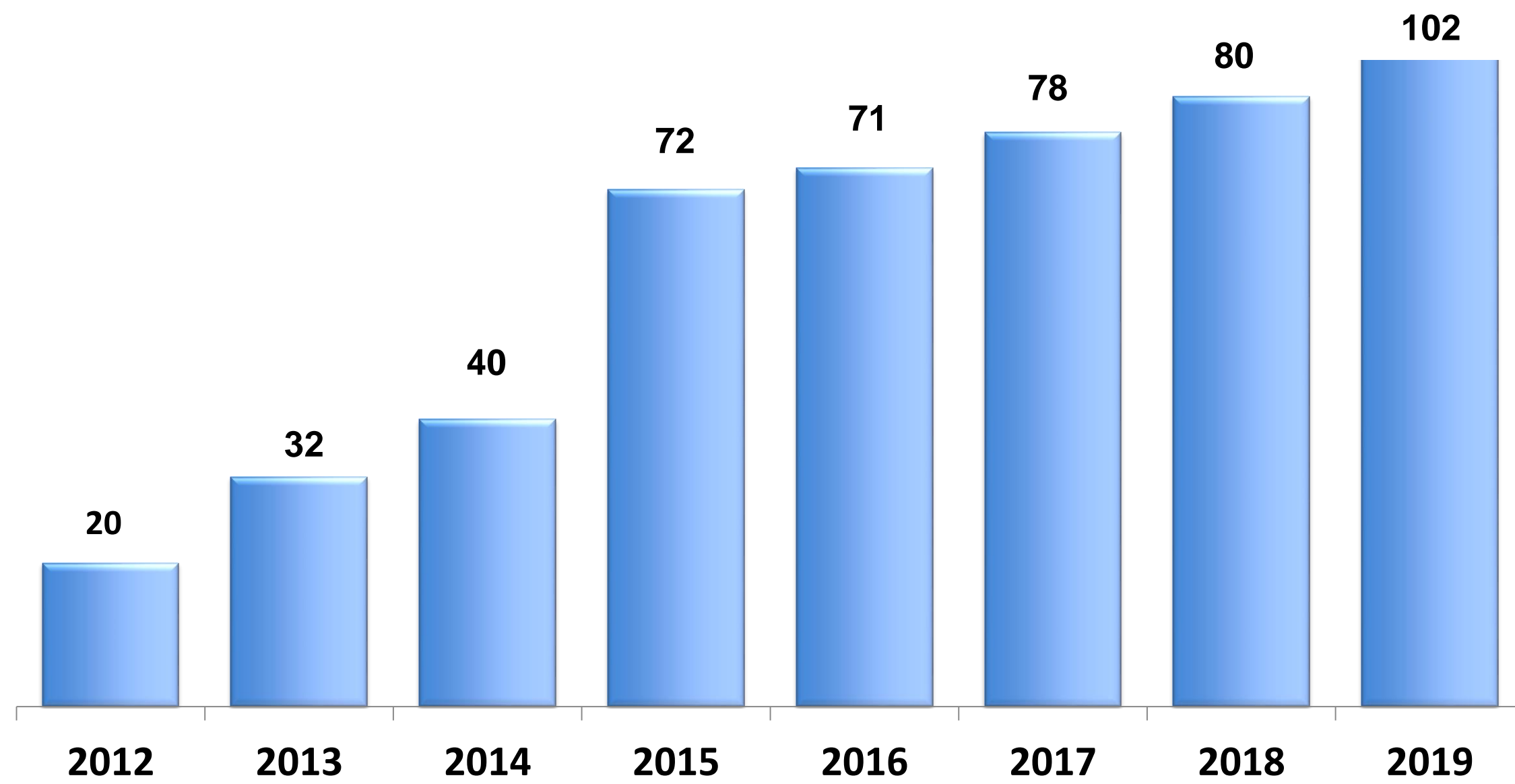




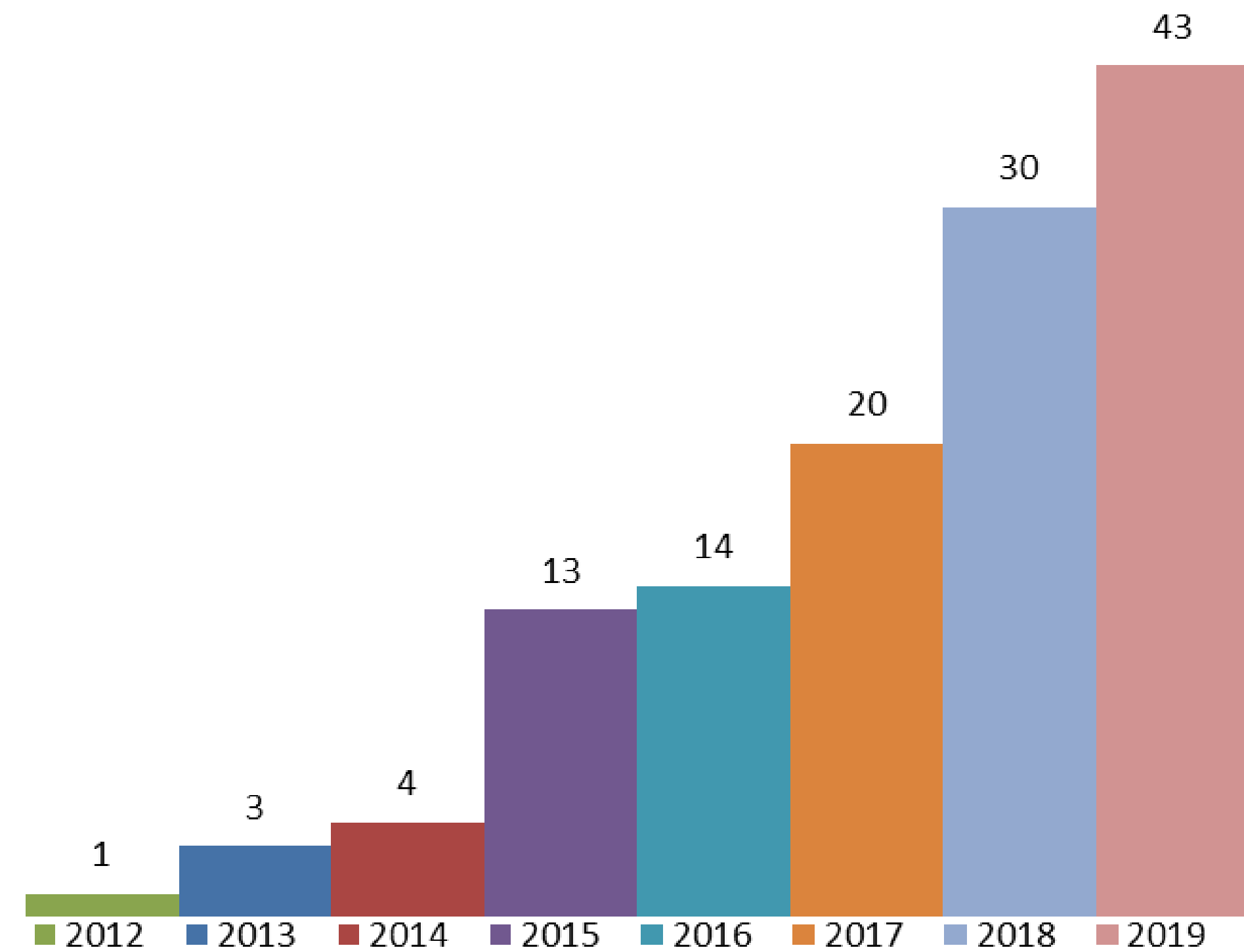
MIB IN NUMBERS

MIB program

Total MIB students



Foreign MIB students





MIB HSE PROFESSORS

MIB program



Irina G. Kratko
*Head of MIB Program,
Associate Professor*

- International Business Research
- International Business Consulting
- International Entrepreneurship
- Research Seminar



Anastasiya Stepanova
*Associate Professor,
Faculty of Economic
Sciences*

- International Corporate Finance
- International Financial Management



Maxim Braterskiy
*Professor, Faculty of
World Economy and
International Affairs*

- Global Political Economy and Interaction between Business and Politics



Alexandra Zhukova
*Visiting Professor,
Faculty of Economic
Sciences*

- Economics: Foundations of Managerial Economics



Dmitry Suslov
*Senior Lecturer,
Faculty of World Economy
and International Affairs*
• International Relations



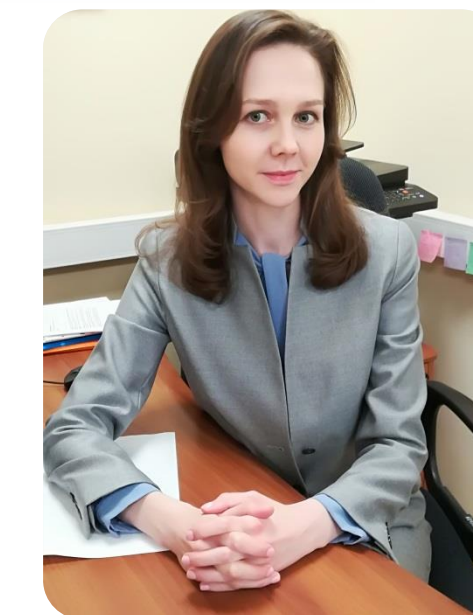
Igor Makarov
*Associate Professor,
Faculty of World Economy
and International Affairs*

- World Economy



Ekaterina Entina
*Associate Professor, Faculty
of World Economy and
International Affairs*

- Political Aspects of International Business



Oksana Soboleva
*Senior Lecturer,
School of Finance*

- Corporate Governance of International Companies



MIB TEACHING EXECUTIVES & LEADING EXPERTS

MIB program



Vyacheslav Buevskiy
*Partner, Strategy and Deals
Advisory Department, PwC*

- International Marketing Strategies
- International Market Research and Analysis
- Strategic Management of International Companies



Vladimir Lissniak
*President, ANO
"PERICLES"™*

- International Business Negotiations



Yuriy Gavrilyuk
*Head of Secondary Logistics Department,
METRO Cash&Carry*

- International Operational and Supply Chain Management



Alexey Blinov
*Finance Director,
Mondelēz
International
(Eastern Europe)*

- International Corporate Finance
- International Finance (advanced)



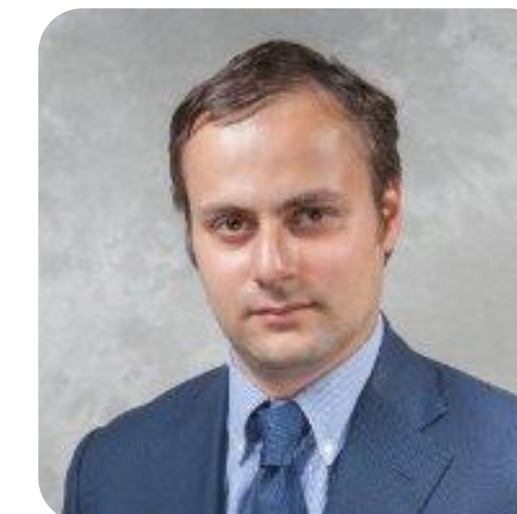
Sergey Krokhaliev
*Partner, Baker &
McKenzie*

- International Business Transactions



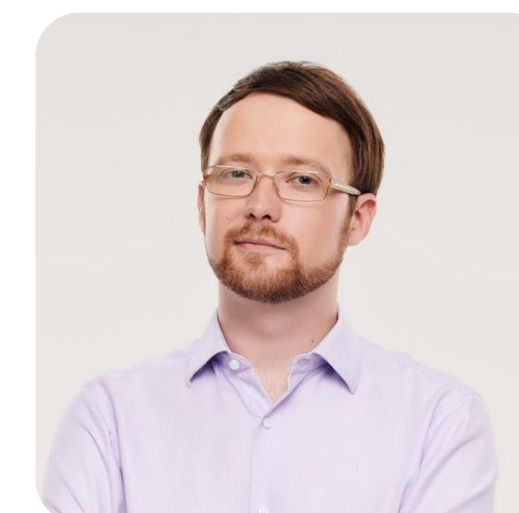
Maxim Shevchenko
*Marketing Director
OTC – Russia,
GlaxoSmithKline*

- International Marketing
- Global Brand Management



Dmitry Khokhlov
*Managing Director,
Accenture
Co-Founder, DIGITALIZM*

- Digital and Traditional Channels in International Advertising



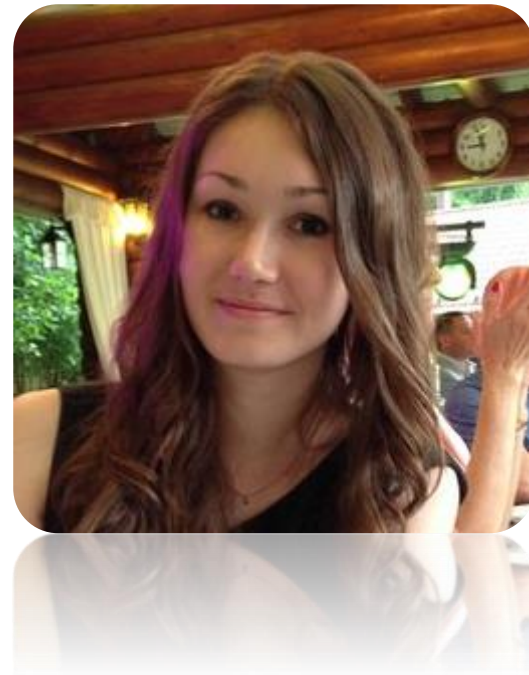
Fedor Vassilyev
*Head of Cross-cultural
Communication Department,
Business Speech*

- World's Business Cultures



MIB TEACHING PRACTITIONERS

MIB program



Maria Pinson
*Junior Brand Manager,
Reckitt Benckiser
Healthcare*

- Research Seminar (Year 2)



Nikita Nazarov
*Senior Analyst in Trade and Treasury Solutions
Department, Natixis JSC*

- International Business Research (Year I)
- Research Seminar (Year 2)



Dmitry Pozdeev
*Senior Consultant in
Strategy, Analytics and
M&A, Deloitte Russia*

- International Business Consulting (Year 1)



Alla Dynko
Manager, PwC's Freelancer Marketplace, PwC

- International Business Consulting (Year 1)



Ekaterina Fokina
*Change Manager,
AO Raiffeisen Bank Russia*

- Research Seminar (Year 1)



Anna Yasintseva
*Market Analyst and Client Consultant
at AC NIELSEN*

- Research Seminar (Year 1)



MIB BUSINESS PARTNERS

MIB program



**Coca-Cola HBC
Russia**



pwc



STIEBEL ELTRON
Technik zum Wohlfühlen



HEALTH ▾ HYGIENE ▾ HOME



**ЕКОНИВА
ЭКОНИВА**



simple



nielsen
.....



Energozapas



MIB ALUMNI CAREERS

MIB Program

-
- McKinsey&Company
 - BCG
 - PwC
 - KPMG
 - Ernst&Young
 - Deloitte
 - Roche & Duffay
 - Raiffeisenbank
 - Societe Generale Group
 - Tinkoff Bank
 - VTB Bank
 - Mastercard
 - Accenture
 - AC Nielsen
 - Yandex
 - L'Oreal
 - Estee Lauder
 - Chanel
 - Guccio Gucci S.p.a.
 - Vogue
 - Nike
 - Henkel
 - Unilever
 - Procter & Gamble
 - Reckitt Benckiser
 - Kimberly-Clark
 - Fater S.p.a.
 - SC Johnson
 - METRO Cash and Carry
 - Mondelez International
 - Coca-Cola HBC
 - Heineken
 - Burger King
 - Danone
 - Simple
 - General Electric
 - Haier Russia
 - Philips
 - HUAWEI
 - Fudzi Motors
 - Mercedes-Benz
 - Michelin
 - Toyota Motors



MIB SOCIAL LIFE

MIB program

MIB Welcome Parties



Business consulting projects



MIB Graduation Parties



Relax after exams



Fun at master classes





JOIN THE MIB FAMILY IN 2020!

MIB program



Please address your questions and /or inquiries to MIB Office Managers:

Alyona Sutormina
(495)772-9590 *27750 mib@hse.ru



Marina Petrashkevich
(495)772-9590 *27749 mib@hse.ru



Website:

<https://www.hse.ru/en/ma/inbusiness>

Address: 11 Pokrovsky Boulevard,
room T-725 (building T)

No entry exams, only portfolio

Application: from 22 June 2020 to 17 August 2020
(for Russian students)

From 1 November 2019 to 14 August 2020
(for foreign students)

Classes start: 1 September 2020



PORTFOLIO CHECK-LIST

MIB program

Motivation letter

Max 1 page of A4 format, in English:

-reasons for applying to MIB in the context of your long-term career goals and background

Two letters of recommendation

Preferably:

- one from an employer
- one from academic institution

Please provide your recommenders with the [HSE's letter of recommendation guidelines](#)

Scans of diploma and official academic transcript

OR official copy of your most recent academic transcript

Resume/CV

- your education
- work experience
- achievements

English language certificate

IELTS, TOEFL, CAE, BEC Higher, etc.

Minimal scores:
IELTS: 6 overall

TOEFL: 80 IBT, 500 PBT

OR an interview in English

+ Additional documents / publications / certificates in International Business

<https://www.hse.ru/en/ma/inbusiness/training>



APPLICATION DEADLINES

MIB program

Foreign
applicants

from **1 November
2019** to **14 August
2020**

Create an account
<http://asav.hse.ru/applyma.html#signup>

Russian
applicants

from **22 June 2020** to
17 August 2020

Online application:

1. 22.06.2020-06.07.2020
(early admission)
2. 07.07.2020-17.08.2020
(regular admission)

<https://www.hse.ru/ma/inbusiness/entrant>

THANK YOU FOR YOUR ATTENTION!



<https://www.hse.ru/en/ma/inbusiness>

Phone.: +7 (495) 7729590*27750

Address: 11 Pokrovsky Boulevard, room T725