

Christian Welzel
(cwelzel@gmail.com)



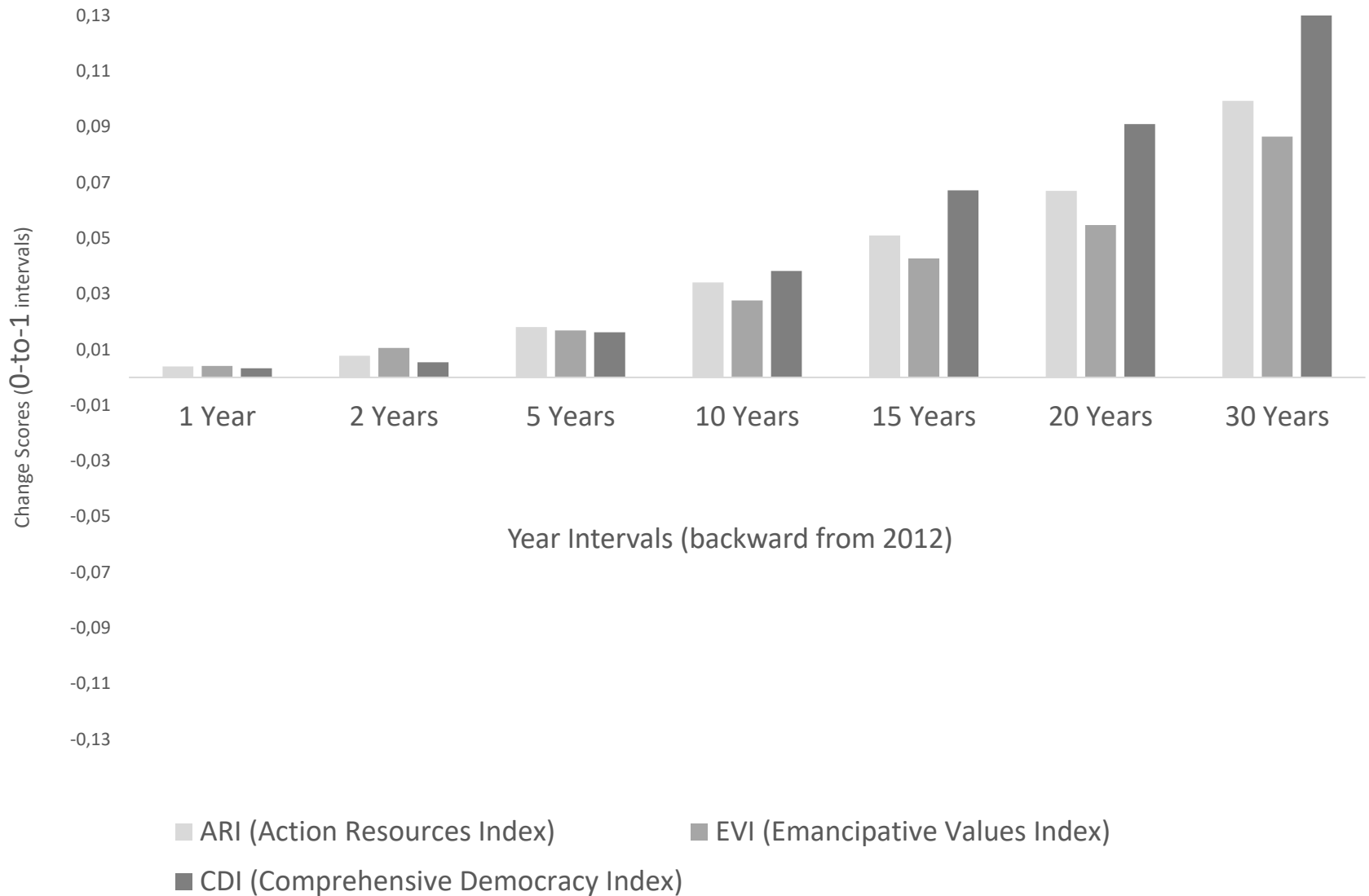
Democratic Horizons



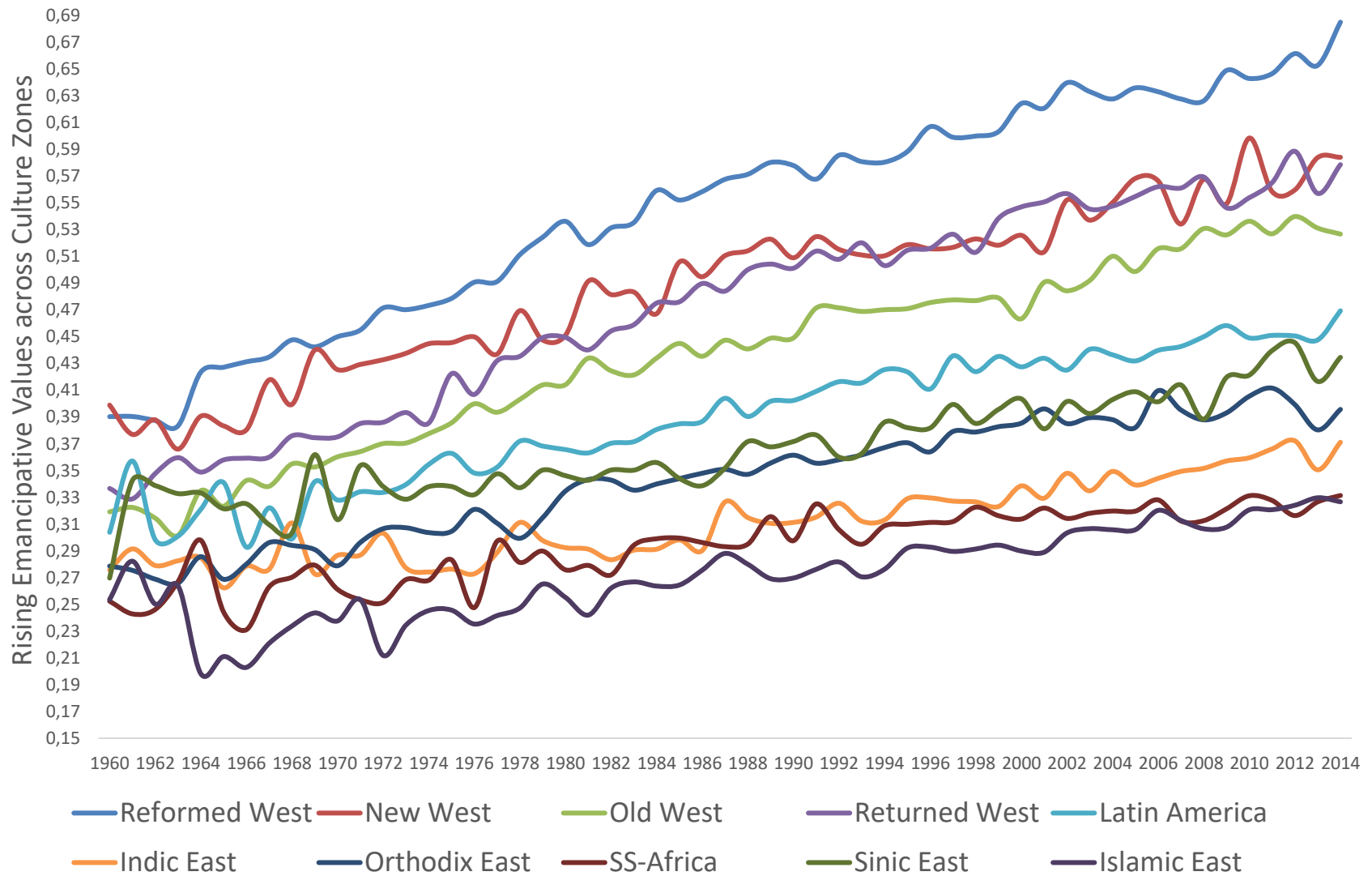
What Value Change
Reveals about the
Future of Democracy



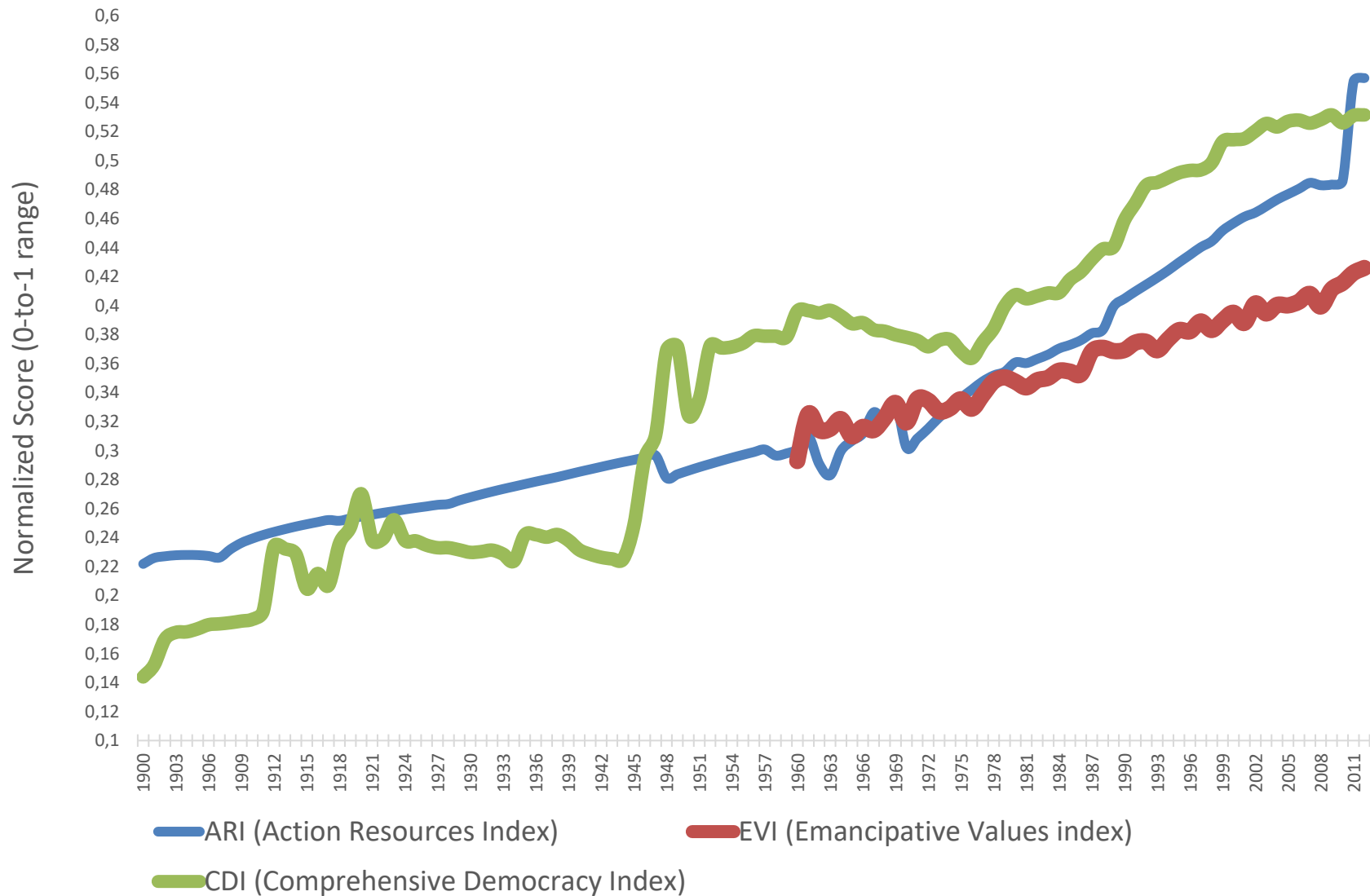
Video Conference, October 1st, 2020 (LCSR, Thursday Seminar)



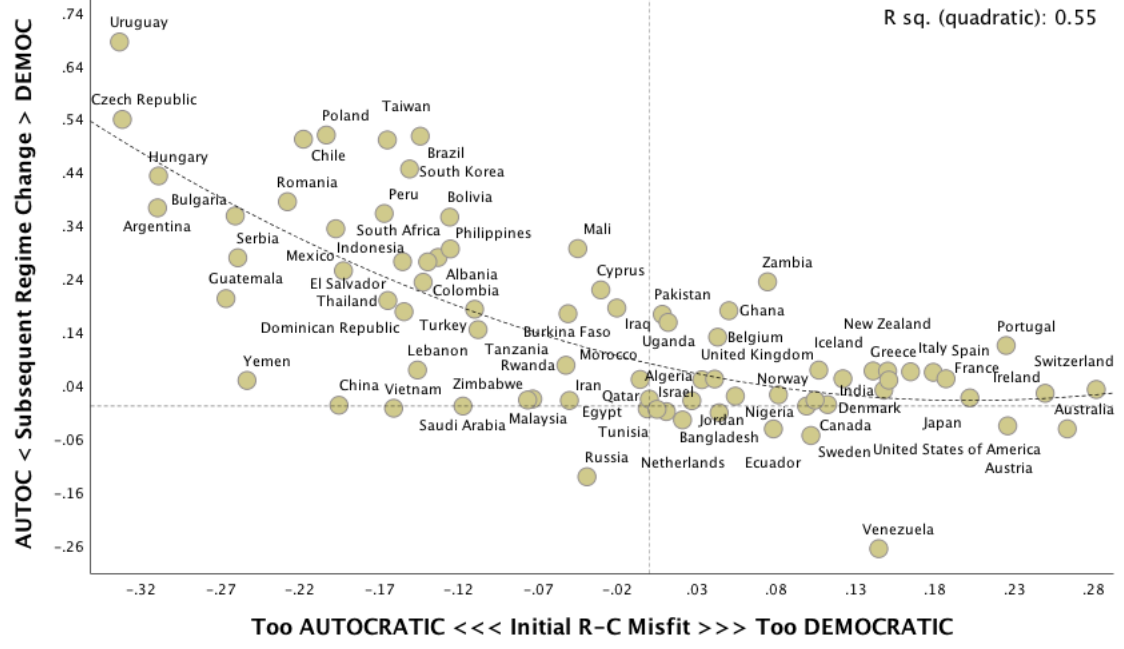
Notes: The ARI combines per capita incomes, mean years of schooling, inverse fertility and inverse income inequality (GINI) into a single index using a time-pooled cross-sectional factor analysis. Index scores are standardized between 0 and 1. For times before the World Development Indicator Series starts (i.e., before 1960) I use Vanhanen's Index of Power Resources to calculate predicted values on the ARI. The EVI is the well-known 12-item index from Welzel, with backward estimations as explained in the footer of Figure . The CDI measures autocracy-vs-democracy by a multiplicative combination of V-Dem's electoral, liberal and participatory democracy components.



Notes: Emancipative Values are backward estimated by transposing cohort differences in a recent survey into a time-series of annual observations, with trend and intercept adjustments, as explained in endnote _____. Trends displayed here are based on national data from 79 nations using weights for population size.

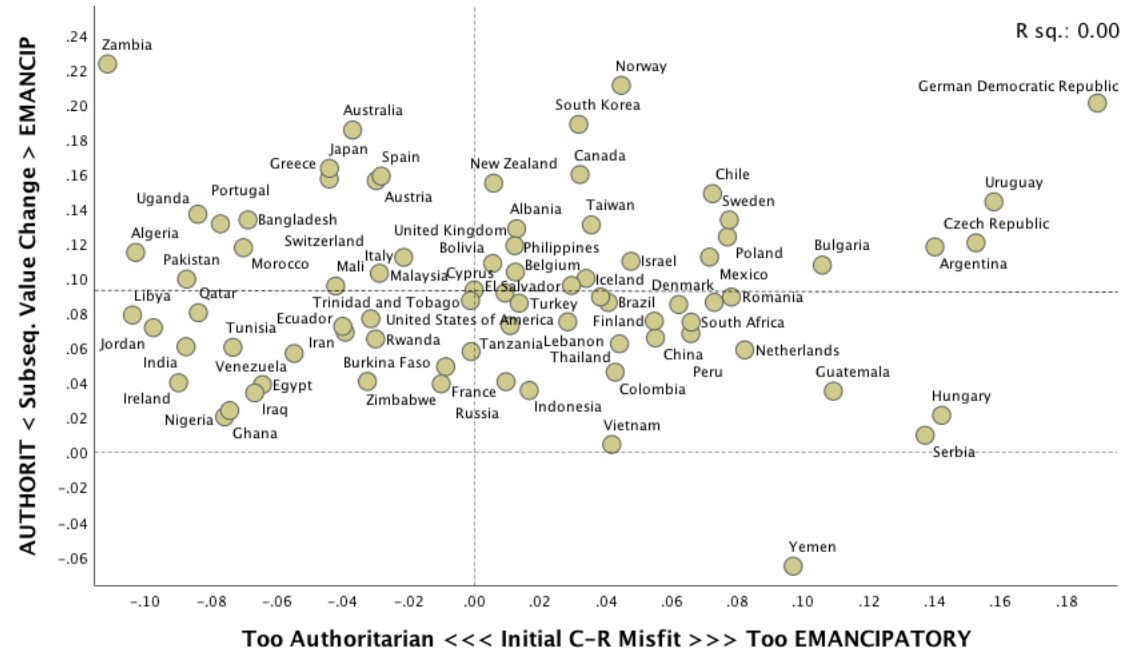


Note: To calculate global averages for the three indices, national data are weighted due to their proportional population size.



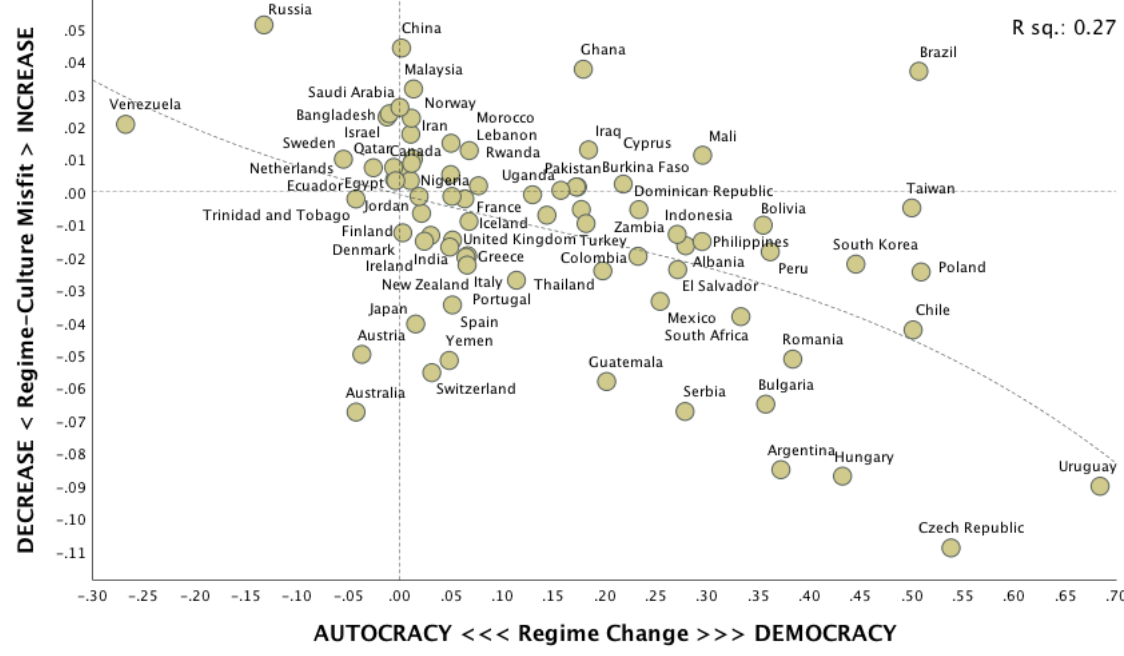
Notes: **Horizontal axis** measures the regime-culture misfit at time t_{-30} by regressing comprehensive democracy at time t_{-30} on backward estimated emancipative values at time t_{-30} and plotting the residuals. Negative residuals suggest that the regime has been too autocratic relative to the population's emancipative values thirty years back in time. Positive residuals suggest that the regime has been too democratic relative to the population's emancipative values thirty years back in time.

Vertical axis measures change in comprehensive democracy from time t_{-30} till time t_0 . In this diagram, t_{-30} is 1980 and time t_0 is 2010. Yet, the pattern exemplified here generalizable to other thirty-year intervals: Regimes change as a function of their once accrued misfit to the surrounding culture.

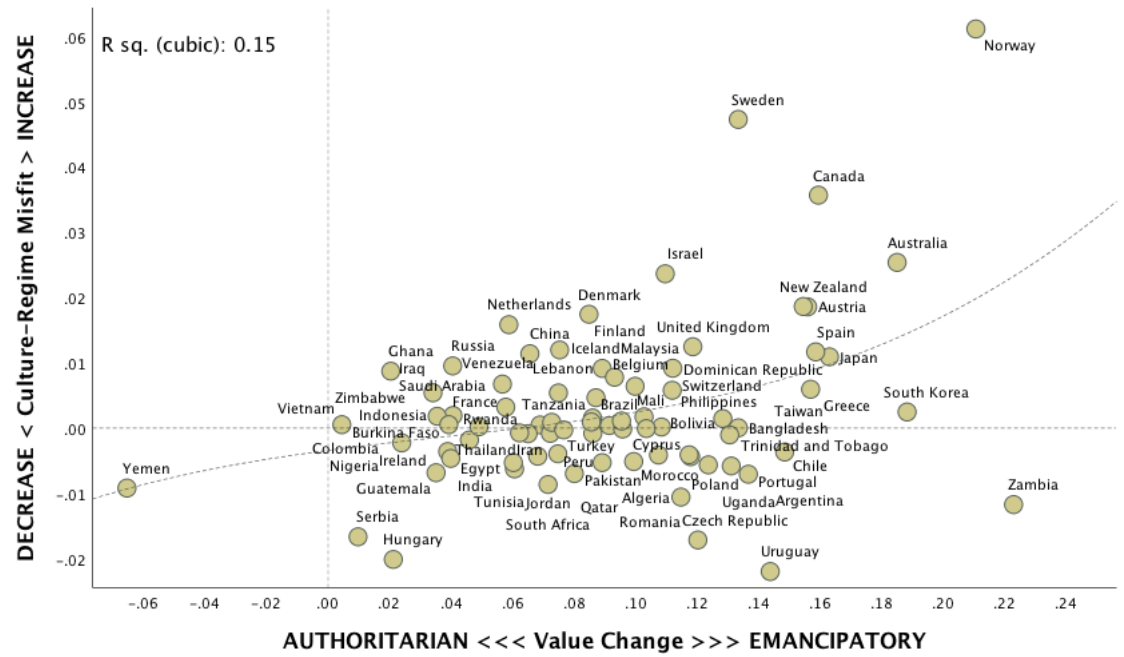


Notes: **Horizontal axis** measures the culture-regime misfit at time t_{-30} by regressing backward estimated emancipative values at time t_{-30} on comprehensive democracy at time t_{-30} and plotting the residuals. Negative residuals suggest that culture has been too authoritarian relative to the regime's democraticness thirty years back in time. Positive residuals suggest that the culture has been too emancipatory relative to the regime's democraticness thirty years back in time.

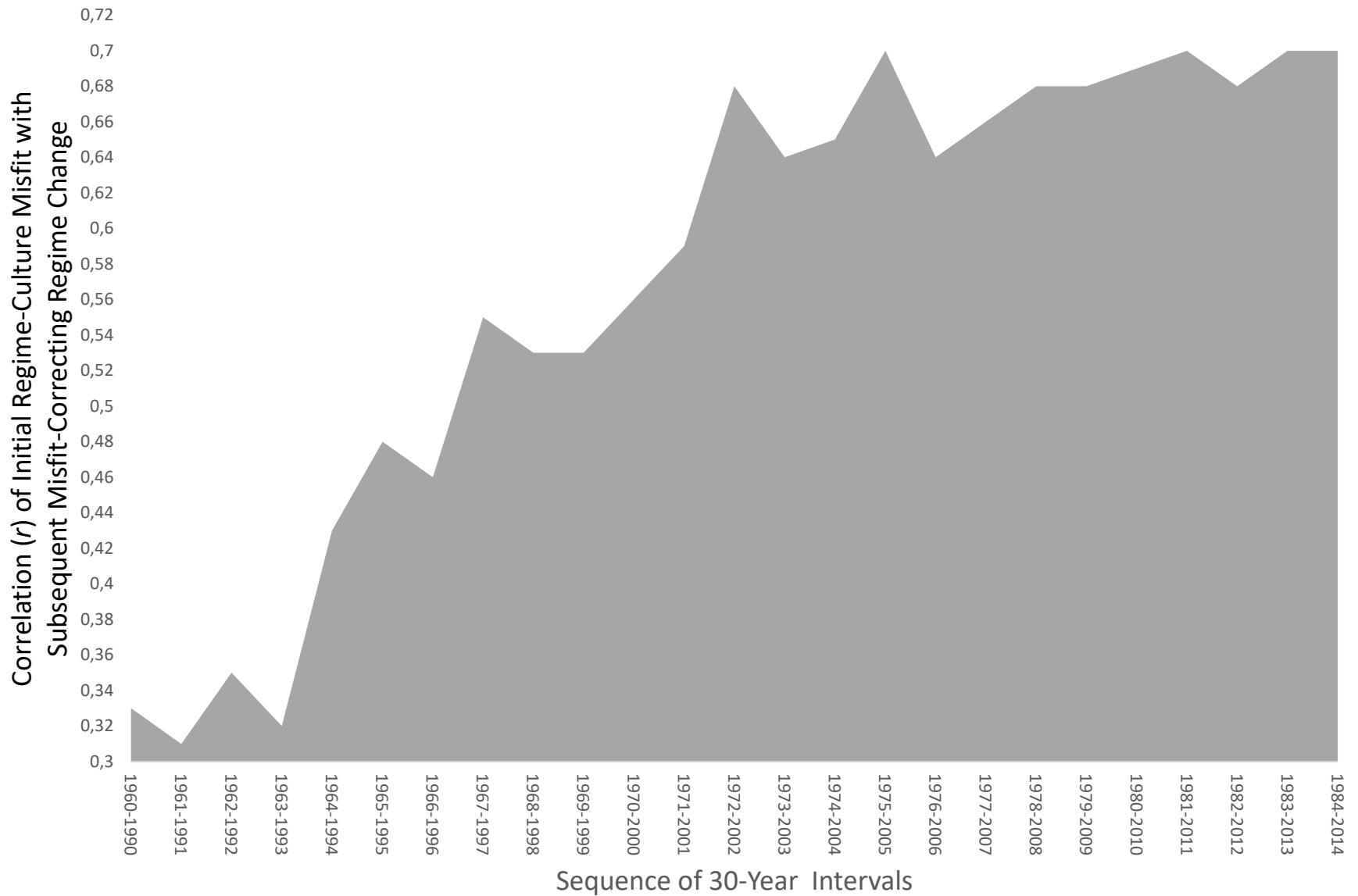
Vertical axis measures change in estimated emancipative values from time t_{-30} till time t_0 . In this diagram, t_{-30} is 1980 and time t_0 is 2010. Yet, the pattern exemplified here is generalizable to other thirty-year intervals: Values do NOT change as a function of their once accrued misfit to regime institutions.



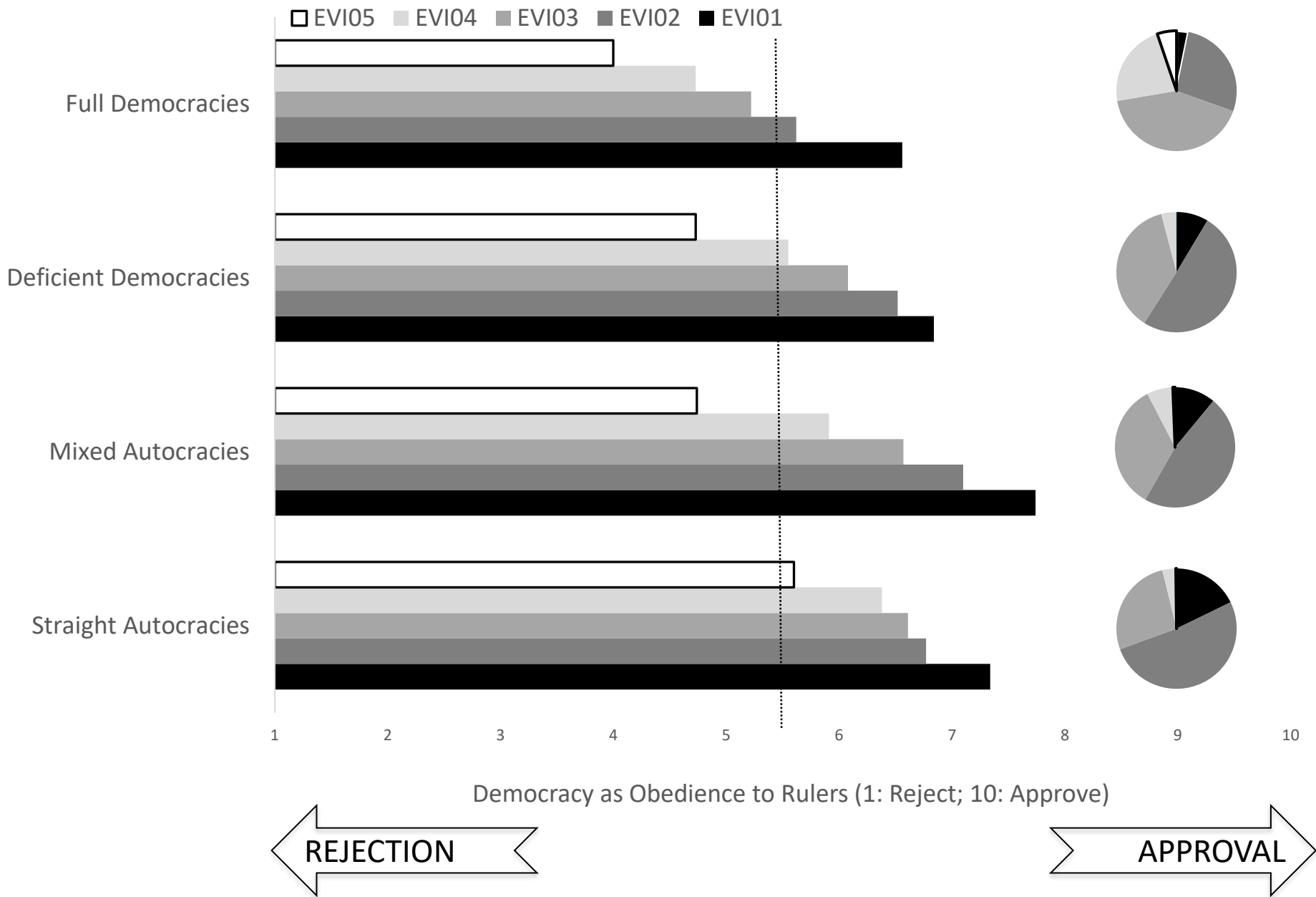
Notes: **Horizontal axis** measures change in autocracy-vs-democracy from t_{-30} till t_0 . **Vertical axis** measures change in absolute regime-culture misfit scores (square-root of squared residuals) from t_{-30} till t_0 . In this diagram, t_{-30} is 1980 and t_0 is 2010. Yet, the pattern exemplified with this temporal choice is generalizable to other 30-year intervals since 1971: Progressing democratization advances to reduce regime-culture misfits.

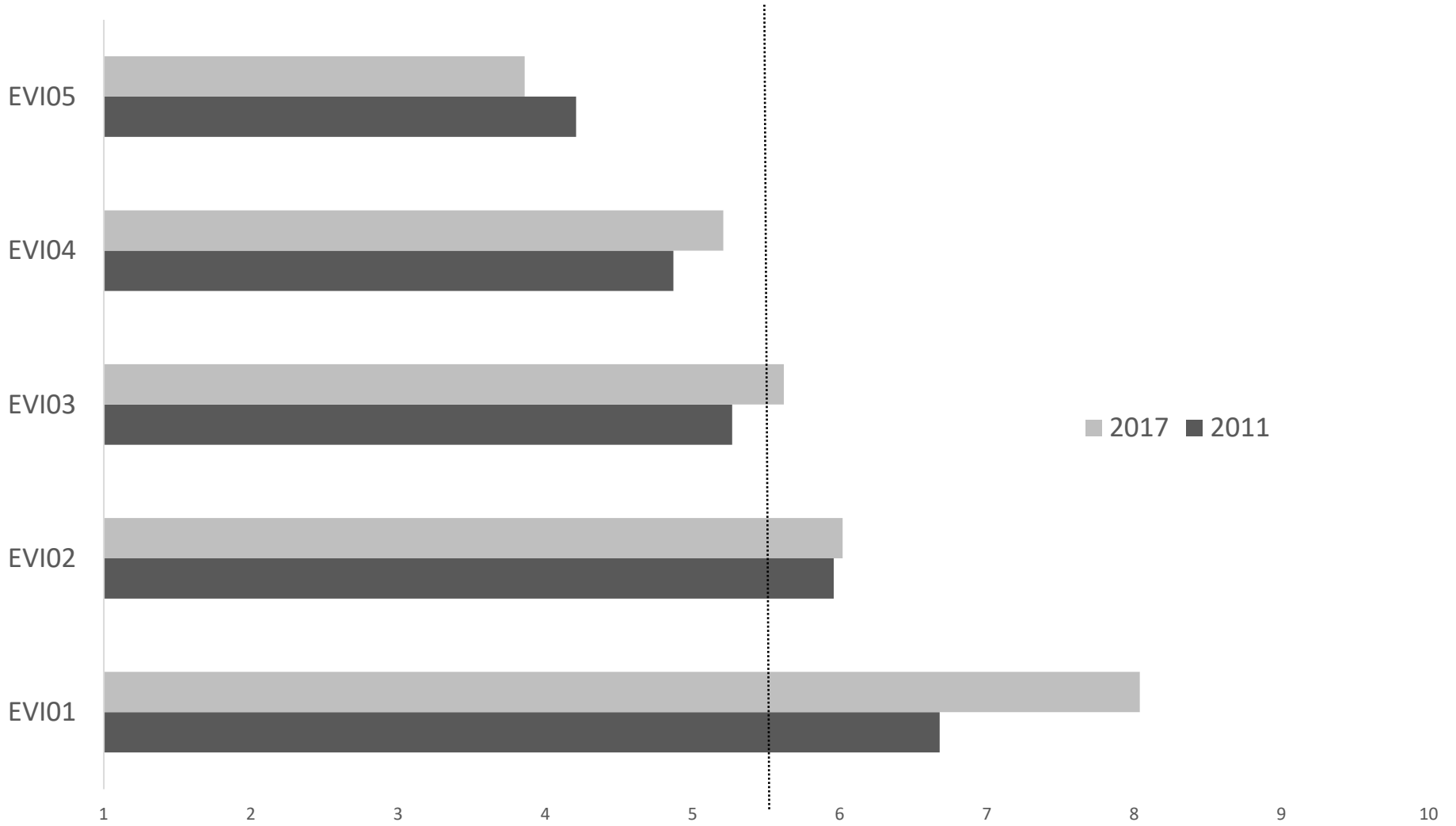


Notes: **Horizontal axis** measures change in estimated authoritarian-vs-emancipative values from t_{-30} till t_0 . **Vertical axis** measures change in absolute culture-regime misfit scores (square-root of squared residuals) from t_{-30} till t_0 . In this diagram, t_{-30} is 1980 and t_0 is 2010. Yet, the pattern exemplified with this temporal choice is generalizable to other 30-year intervals since 1971: Emancipative values advance to accrue culture-regime misfits.



Notes: Correlation between regime-culture misfits at t_{-30} with misfit-correcting regime changes from t_{-30} till t_0 . Noteworthy is the increase starting from 1971 (the beginning of the 3rd Wave) and the stable constancy since then. May it be that emancipative values have grown so strong that regimes can no longer escape the psychological pressure of their populations?





Democracy as Obedience to Rulers (1: Reject; 10: Approve)



