



### *Bachelor's Programme*

# *International Business*



Academic Supervisor



**Contacts**

asveselova@hse.ru

Phone:

+79219344113

28642

Address: 26, Shabolovka Str., room 4306

Manager



**Contacts**

opeganova@hse.ru

Phone:

+74957729590

28225

Address: 26, Shabolovka Str., room 3408



**Welcome to the  
HSE Graduate  
School of Business!**

---





# **Core principles of our educational environment**

- ✓ Academic Rigor and Excellence
- ✓ Practical Application and Experiential Learning
- ✓ Leadership and Development
- ✓ Innovation and Entrepreneurship
- ✓ Global Perspective
- ✓ Ethical Decision-Making and Corporate Social Responsibility (CSR)
- ✓ Collaboration and Teamwork
- ✓ Networking and Professional Development
- ✓ Diversity and Inclusion
- ✓ Lifelong Learning
- ✓ Resilience and Adaptability
- ✓ Analytical and Technical Skills





# General structure of educational program





# **Critical Competences**

**DIGITAL AND  
ANALYTICAL SKILLS**

**SUSTAINABLE  
DEVELOPMENT SKILLS**

**ENGLISH LANGUAGE  
COMPETENCES**

**ENTREPRENEURIAL  
SKILLS**



# CURRICULUM: 1<sup>ST</sup> YEAR

1 <sup>ST</sup> MODULE	2 <sup>ND</sup> MODULE	3 <sup>RD</sup> MODULE	4 <sup>TH</sup> MODULE	SUMMER VACATIONS
01.09.25-24.10.25	01.11.25-19.12.25	09.01.26-24.03.26	01.04.26-19.06.26	01.07.26-31.08.26
Calculus		Macroeconomics		
Microeconomics		Probability Theory and Mathematical Statistics		
Career Guidance Seminar "Managerial profession in the modern world"		Marketing		
Digital Literacy		Management: Concepts and Technologies of the 21st Century	International Relations	
Philosophy		Project Seminar "SWOT Analysis"	Sustainable Development and Corporate ESG Practices	
Safe Living Basics		Course Project: SWOT Analysis		
Business Communications		Independent Digital Literacy Test	English Language Integrative Exam	
Foundations of Russian Statehood				
English Language				
Physical Training				
Extra curriculum activities				



# *Where to go with questions*

Study office

- Timetable of classes and exams
- Clarification of unclear issues on studying process
- Writing requests to Academic Supervisor, Dean, Rector, Vice Rector, including appeal statements
- Order a certificate of attendance, extract from your electronic gradebook, certificate of education
- Contracts, additional agreements
- Individual curriculum

Course curator

- Communication problems with other students
- Difficulties in studying

Academic Supervisor

- Academic issues related to studying (professors, curriculum, academic consulting, professional orientation)
- The problems that have not been solved by curators or study office



<https://www.hse.ru/en/cpc/>

← → ↻ hse.ru/en/cpc/

The sidebar menu is located on the left side of the website. It features a blue header with the HSE University logo and a hamburger menu icon. Below the header, the text 'CENTRE FOR PSYCHOLOGICAL COUNSELLING' is displayed. The menu items are: 'Counselling services', 'For Foreign Employees', 'Schedule an appointment', 'Self-help materials', 'News', and 'Contacts'. At the bottom, the 'Hours of operation' are listed as 'Monday – Friday 9:00-21:00'.

[HSE University](#) → [Administrative Departments](#) → [Student Development Office](#) → [Centre for Psychological Counselling](#)

## Centre for Psychological Counselling

24-hour hotline [88002500433](tel:88002500433)

- ✓ The Psychological Counseling Centre provides free counseling for students and faculty in times of stress, and encourages them to ask for help with their most immediate concerns.
- ✓ Our staff is experienced in dealing with deeper developmental and psychological issues ranging from stress and depression to problems of adaptation and eating disorders. All concerns are addressed with sensitivity, respect and understanding.
- ✓ We also provide services to those who wish to prevent their concerns from developing into more serious problems. Our essential goal is to provide an environment where students are free to ask for help. Therefore we maintain the strictest standards of privacy and confidentiality.

## Student ID

- Required for all students.
- Issued by your programme's study office
- Confirms student status for receiving documents and student benefits.
- Subject to prolongation by your programme's study office every year.

If you have lost your student ID, you can request a replacement from your programme's study office or the HSE Student Service Centre.



✓ Bring a **photo 3x4** to room 3408 on the first week of study



### E-pass

- Allows access to all HSE University buildings.
- To get an e-pass, contact the HSE Pass Collection Desk.
- You can find its address and office hours on the Security and Operations Office [website](#).



## ***HSE University buildings***

Learn more about locations of many HSE University buildings and campuses, e.g., regional locations, [here](#).



## *Library e-card*

- Allows you to use the services and resources of HSE University's libraries, e.g., remote access to e-resources.
- To obtain a library e-card number, register on the HSE University Library's website by filling in an application, either on the Library's page or via the HSE App X.
- Find out more about [HSE University Library](#) services.





## ***Moscow social card***

- Available for all full-time undergraduate and graduate (e.g., doctoral) students.
- Discounts on public transport in the City of Moscow and suburban train services.
- Applications for the issue of a Moscow social card can be made at [www.mos.ru](http://www.mos.ru); you can then collect an issued card from the Moi Dokumenty (MFTs) centre

Find out more about issuance of [\*\*Moscow Social Card\*\*](#)





## *Other documents (requesting certificates)*

- To obtain various types of study certificates, please contact your programme's study office (room 3408) or the HSE Student Service Centre.

Find out more about available services at the

**HSE Student Service Centre** <https://studentcentre.hse.ru/en> .





### ***Student e-mail***

- Use your student e-mail for communications between yourself and teachers, the study office of your programme and the University's administration.
- Student e-mail account is provided by the University for the entire period of your studies.
- Your login and initial password for accessing your HSE University e-mail account will be sent to your personal e-mail address prior to the start of your courses.
- The web interface of corporate email can be accessed at: <http://edumail.hse.ru> or <https://mail.yandex.ru/>.
- Use your HSE student email (\*\*@[edu.hse.ru](mailto:edu.hse.ru)) and password. You can change your password in MyHSE Services Account ([lk.hse.ru](http://lk.hse.ru)).
- Students are provided with 1TB of storage in Yandex Disk and Yandex Mail services, they can use Yandex Messenger for instant messaging, audio and video calls, and other Yandex 360 services.



**Graduate School of Business**

## ***My HSE Services account (ELK)***

Provides access to various services.

Website: [lk.hse.ru](https://lk.hse.ru)

Students can access their personal account by using their student e-mail login and password (login@edu.hse.ru).



## ***HSE University's virtual learning environment (SmartLMS)***

HSE University's unified educational space involves all stakeholders in the learning process: teachers upload course materials, assignments and tests, while students can submit their homework assignments.

### **How to access:**

Website: <https://edu.hse.ru/login/hselogin.php>

Students can activate their accounts in SmartLMS with their login (login@edu.hse.ru) and password to their student e-mail.

### **The following services can be accessed via SmartLMS:**

- Study training materials
- Perform different types of academic activities (upload assignments, term papers, pass tests)
- Communicate with teachers, study offices and other students
- Check their grades for academic activities completed there



### *Useful mobile apps*

- **HSE App X**

At the tips of your fingers, you can have access to your timetable, course grades and ratings for any period, as well as extend borrowed books, check if you have active remote access to e-library resources, and more.

Do not forget to upload scans of your migration documents (migration card and registration slip) with this App!

- **HSE.Navigation**

HSE.Navigation — this is a detailed navigator with a map of the HSE University complexes on Pokrovka, Shabolovka, Myasnitskaya and Malaya Ordynka.

<https://istudents.hse.ru/mobileapp>





**Graduate School of Business**

## ***HSE hotline***

The hotline's specialists can provide assistance and consultations on working with our digital platforms, systems and services.

### **Get in contact**

- **By phone**

+7 (495) 625 50-15 or +7 (495) 772-9590 \*55555

- **Through your MyHSE Services account**

You can access the **HSE Hotline**.

- **Via e-mail**

digital@hse.ru

Operators work Monday through Friday, from 8am to 8pm, Moscow time. Inquiries can be received electronically 24/7.

**More information** about the service.



## Timetable

**You can find your timetable using the following options:**

- on the webpage of your educational programme [www.hse.ru/ba/ib/](http://www.hse.ru/ba/ib/)
- via [MyHSE Services Account](#)
- via e-timetabling system [RUZ](#) (only available via internal HSE network)
- via [HSE mobile app](#)

The app allows users to browse their timetable (use corporate email address @edu.hse.ru to log in), search classes by lecturers / study groups, find location of classes, and integrate the timetable into one's personal calendar.

### HSE MOSCOW

---

09:30-10:50 (1 Class)

---

11:10-12:30 (2 Class)

---

13:00-14:20 (3 Class)

---

14:40-16:00 (4 Class)

---

16:20-17:40 (5 Class)

---

18:10-19:30 (6 Class)

---

19:40-21:00 (7 Class)

---



## Academic calendar 25/26



### График учебного процесса 2025/26 учебного года

Модули/каникулы	Даты занятий/каникул	Даты сессий
Модуль 1	1 Сентября – 24 Октября	25 Октября – 31 Октября
Модуль 2	1 Ноября – 19 Декабря	20 Декабря – 30 Декабря
Зимние праздничные дни	31 Декабря – 08 Января	25 Марта – 31 Марта
Модуль 3	9 Января – 24 Марта	20 Июня – 30 Июня
Модуль 4	1 Апреля – 19 Июня	
Весенние каникулы	2 Мая – 8 Мая	
Летние каникулы	1 Июля – 31 Августа	
Последипломные каникулы	1 Июля – 11 Августа	
Праздничные дни	4 ноября; 23 февраля; 8 марта; 1 мая; 9 мая; 12 июня	





# International Mobility

## Student **exchange** opportunities

Our students have an opportunity to spend a semester or the entire academic year at the leading business schools and universities of the world.



Long-term and short-term exchange programmes



Summer/Winter schools



International scientific conferences



Student projects and contests

<https://gsb.hse.ru/en/iec/>



Head of project  
Olga Rodina



Manager  
Olga Spindonova



Manager  
Liubov Mitina

### Contacts

Office 4301, 26/4 ul.  
Shabolovka

Tel: +7 (495) 772-95-90  
\*27916, 28503

Email: [outgoing.gsb@hse.ru](mailto:outgoing.gsb@hse.ru);  
[incoming.gsb@hse.ru](mailto:incoming.gsb@hse.ru)

Vkontakte

Telegram

YouTube



## GSB Career Centre

Choose your path to success



Annually students of Graduate School of Business show high level of elaboration real business cases  
and differ in deep preparation to up-to-date labor market demands.

GSB Career Centre suggest the biggest russian and international companies to be a partners in different fields:  
internships, course project work, events, and others.

<https://gsb.hse.ru/en/careercentre/>





# Printing documents

You can print documents at the HSE Printing Office's various outlets.

You can find information about printing facilities [here](#).

Copy-center No. 2 - (Shabolovka)

Address: room 3103, building 3, 26, Shabolovka str., Moscow, 119049,

Phone number: 8 (495) 772-95-90 \* 26195,

Mobile phone: 8 (916) 023-57-72

Internal phone numbers: 26195

E-mail: [print\\_shabolovka@hse.ru](mailto:print_shabolovka@hse.ru)

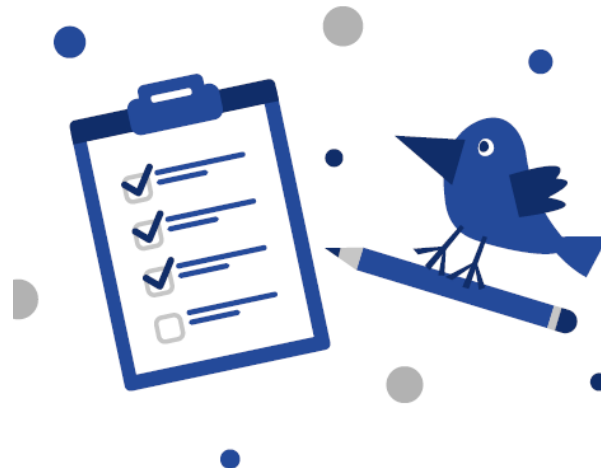




# To-do list

## *Preparing for Studies*

- ☐ Get access to your student e-mail and SmartLMS system.
- ☐ Get a student ID card issued (bring photo!)
- ☐ Apply for an e-pass.
- ☐ Register with the HSE University Library and get remote access to its e-resources.





# Graduate School of Business



## HSE Academic Handbook

<https://www.hse.ru/en/studyspravka/>

← → ↻ hse.ru/en/studyspravka/ Обновить

HSE University → Administrative Departments → Degree Programmes Department → HSE Academic Handbook

RU EN 👁 👤 🔍

### HSE ACADEMIC HANDBOOK

Distance Learning >

FOR HSE FACULTY MEMBERS

For International Faculty >

For Full-degree Students >


For Exchange Students >

For Teaching Assistants >

MOOC's >


Legal documents >

## HSE Academic Handbook



### FOR STUDENTS

- [Timetable](#)
- [Structure of the bachelor's degree programme \(since 2020\)](#)
- [Your Individual Curriculum](#)



### FOR FACULTY MEMBERS

- [Special Aspects of the HSE University's Study Process](#)
- [Options for Conducting Online Courses](#)
- [Inter-campus Courses](#)

✓

Have you spotted a **typo**?  
Highlight it, click Ctrl+Enter and send us a message. Thank you for your help!  
To be used only for spelling or punctuation mistakes.

# ***Student Life***

- HSE has got more than 140 student organizations with different types of activities, whether it is a business sphere, an interest club or an event organization community, everyone can find something to their liking. This is not only a great opportunity to have a good time, but also a way to find new friends and like-minded people, as well as a unique platform where you can learn how to manage projects, be creative, work in a team and much more.



<https://sport.hse.ru/en/>  
<https://extra.hse.ru/>

# sTud Team GSB



If you are motivated and interested in student life, we invite you to become a part of the club of Residents of the HSE Graduate School of Business.

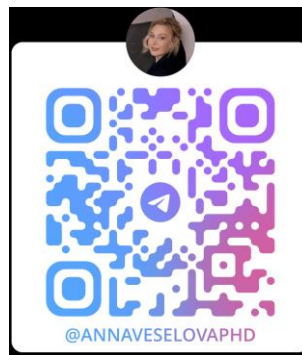
Residents of the HSE Graduate School of Business are a student community that unites all caring and active students.





## Graduate School of Business

### Communication with us



Academic Supervisor  
**Anna Veselova**  
[asveselova@hse.ru](mailto:asveselova@hse.ru)  
**+7 921 934 41 13**



Manager  
**Olesya Peganova**  
[opeganova@hse.ru](mailto:opeganova@hse.ru)  
**+7 (495) 772-95-90 \*28225**