



NATIONAL RESEARCH  
UNIVERSITY

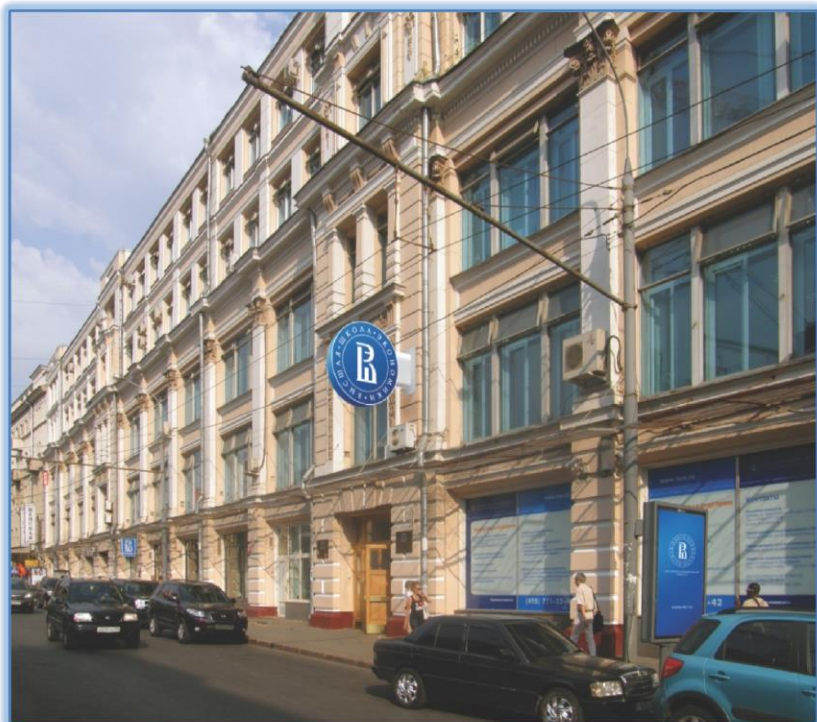
# National Research University

## HIGHER SCHOOL OF ECONOMICS

### Moscow campus



# HSE: Key Facts



## Since July, 2013:

- New development paradigm towards global competitiveness (the “5/100” program)

## November 27, 1992:

- The date HSE was founded

## Since August 2008:

- Operates under the auspices of the Government of the Russian Federation

## Since October 2009:

- Distinguished status of a National Research University (the only university in the field of economics and social sciences)

# HSE-Moscow: Key Figures

16 192 students

1 637 full-time instructors

729 full-time researchers

100 tenure professors



35 buildings + 10 housing buildings

8 faculties

45 Bachelor Programs

over a 100 Master programs (17 in English)

[136 bilateral agreements for student exchange](#)

# Faculties and Schools – HSE Moscow

## Economics and Management

**Economics**

**Statistics, Data Analysis and  
Demography**

**Management**

**Logistics**

**World Economy and  
International Affairs**

**Asian Studies**

**Public Administration**

**International College of  
Economics and Finance**

**Urban Studies and Planning**

## Social Sciences and Humanities

**Sociology**

**History**

**Law**

**Politics**

**Philology**

**Philosophy**

**Cultural Studies**

**Psychology**

**Design**

**Media and Communications**

**Integrated Communications**

**Graduate School of Education**

## STEM

**Information Science**

**Applied Mathematics and  
Information Science**

**Software Engineering**

**Business Informatics**

**Mathematics**

**MIEM – HSE (Moscow  
Institute of Electronics and  
Mathematics):**

- ✓ Information Technology & Computer Engineering
- ✓ Applied Mathematics and Cybernetics
- ✓ Electronics and Telecommunications



# Student Mobility: Facts and Figures

## Incoming exchange students:

- Europe (Germany, France, Italy, The Netherlands)
- Asia (South Korea, Japan)
- USA
- Brazil



# Incoming student mobility

- Tuition-free
- Access to most of the courses
- Assistance in individual study plan development
- Free semester-long Russian language course at different levels



- International students support service
- Visa extension support
- Convenient accommodation (dormitory)
- Help from the Buddy Network

# Incoming student mobility: offered services

Before Arrival	Upon Arrival	During Stay
<p>Invitation from Russian Federal Migration Service</p> <p>Acceptance letter</p> <p>Dormitory reservation</p> <p>Individual study plan</p> <p>Inquiries management</p>	<p>Buddy assistance</p> <p>Pick up at the railway station</p> <p>Visa registration</p> <p>Orientation service</p> <p>Help with documents</p> <ul style="list-style-type: none"> <li>• student ID</li> <li>• transport card</li> <li>• arrival forms</li> <li>• library card</li> <li>• entry pass</li> </ul>	<p>Multiple entry visa support</p> <p>Timetable and study process</p> <p>Instruction on LMS</p> <p>Social events</p> <p>Transcript issuance</p> <p>Inquiries management</p>

# Academic Calendar 2015/2016

## Fall semester September 1 – December 27

**Module 1** September 1 – November 1

**Exams** October 26 - November 1

**Module 2** November 2 – December 27

**Exams** December 22 – December 27

*Winter break*

## Spring Semester January 12 – July 3

**Module 3** January 12 – April 3

**Exams** March 28 – April 3

**Module 4** April 4– July 3

**Exams** June 15– June 30

*Summer Break*





# Mobility Deadlines

Procedure	Fall semester	Spring semester
Nominations are accepted until	15 April	15 September
Students' documents are accepted until	15 May	15 October
Invitation for the visa is sent not later than	45 days after documents are submitted	
Visa is to be applied for not later than	15 days before arrival	
Arrival (recommended date)	22 August	10 January

*In order to apply for exchange – address the International office of your home university.*

# All enquiries are processed by International Students Support Office

## INTERNATIONAL STUDENTS OFFICE



**Sofia Sadykova**  
Head of International  
Students Support

**Ksenia Shomnikova**  
Manager of International  
Students Support  
(General)



**Maria Beykel**  
Manager of International  
Students Support  
(General)

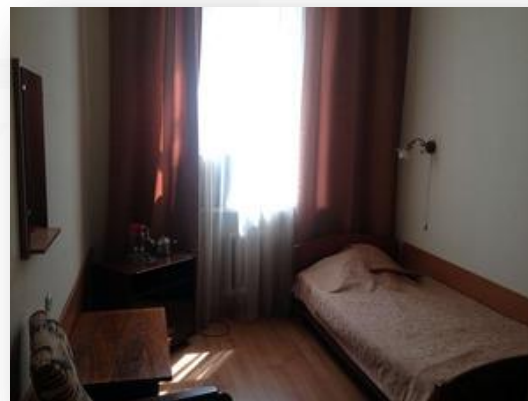
**Nina Nikolaeva**  
Manager of International  
Students Support  
(Academic)



# HSE Dormitories



- **Shared rooms**
- **Free Wi-Fi**
- **Study facilities**



- **Buddy support on site**
- **Gym**
- **Close to city center**

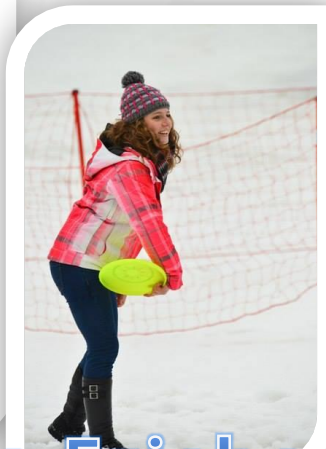


- **Affordable price**
- **Friendly staff**
- **Accommodation for the whole period of study**

# HSE Students Life: Active Leisure



## SPORTS



## Ultimate Frisbee



## Tourist Club



## ICEF Outreach



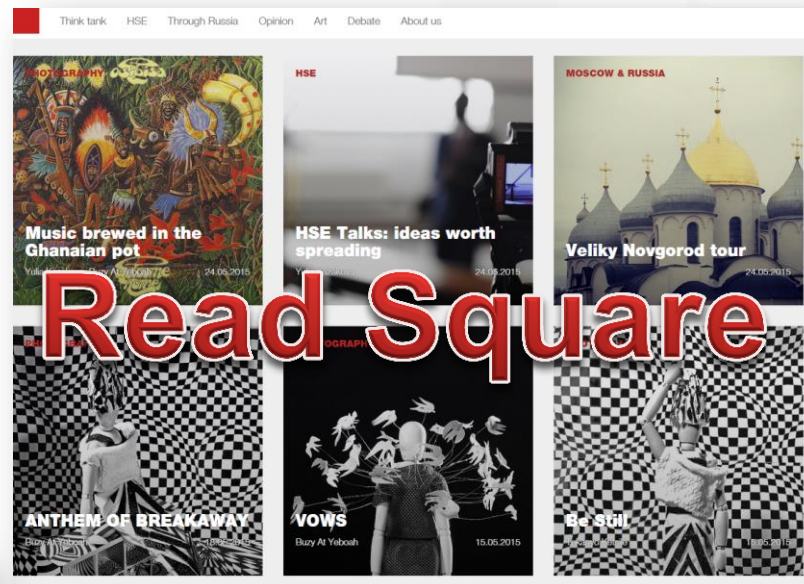
## Bake Sale



## Hospital clowns



# HSE Students Life: Initiatives





## HSE Day: Anniversary + City Event

- City Holiday in the Gorky Park of Moscow
- Presentation of all faculties and programs
- Presentation of Clubs, Projects, Sports
- Dance battles
- Concert





## Winter Health Day

- Winter sports trainings and lessons
- Entertaining events
- Competitions





# HSE Students Life: Events

## HSE-Open

Global International Event “Parliament Debates”

Over 50 teams from Austria, Germany, Spain, Turkey and other countries

## Intelligent Crow

“Brain-ring” (intellectual game) for student teams from Moscow Universities

## Cultural

Sightseeing in/around Moscow and other places



# HSE International Students Support: Contacts

website: [istudents.hse.ru/](http://istudents.hse.ru/) / e-mail: [international.study@hse.ru](mailto:international.study@hse.ru)

## SERVICES

[Visa & Registration](#)  
[Orientation Session](#)  
[Student Documents](#)  
[Medical Aid & Insurance](#)  
[Buddies Network](#)  
[Psychological Counseling](#)

## CAMPUS FACILITIES

[Dormitories](#)  
[Library](#)  
[Canteens](#)  
[Self-study Areas](#)  
[Internet Access & Printing Hubs](#)  
[Sport Facilities](#)

## CAMPUS LIFE

[Student Clubs and Activities](#)  
[Sports at HSE](#)  
[HSE Traditions](#)

## PRACTICAL ISSUES

[Pre-departure Checklist](#)  
[Upon Arrival Checklist](#)  
[Employment Regulations](#)  
[Life in Moscow](#)  
[Useful Links](#)



## STUDENT SUPPORT

Thank you for choosing our university for your international study experience. It is a great honour and pleasure for the International Students Office (ISO) to have you with us.

This website is intended to serve as a quick reference whenever you encounter a problem or simply have a question. It will prepare you for life and study in Moscow and answer at least some questions that might arise during the first days of your stay.

We wish you success and many wonderful discoveries!

News ▾

## ACADEMICS

[Course Catalogue](#)  
[Timetables](#)  
[Academic Calendar](#)  
[Individual Study Plan](#)  
[Credits & Grading System](#)  
[Knowledge Assessment](#)  
[Student Email](#)  
[Learning Management System](#)  
[Student Integrity & Copyright](#)  
[Transcript of Records](#)  
[Certificates for Students](#)  
[Scholarships](#)  
[Teaching Assistant and Tutoring Jobs](#)  
[Research Projects](#)  
[Russian as a Foreign Language](#)  
[Study Offices at the Faculties](#)



Feedback



[STUDENT HANDBOOK \(PDF, 4,51 MB\)](#)

## CONTACTS ▸

International Students Office (Moscow)

11 Myasnitskaya Ulitsa, office 301